



TMS GUI

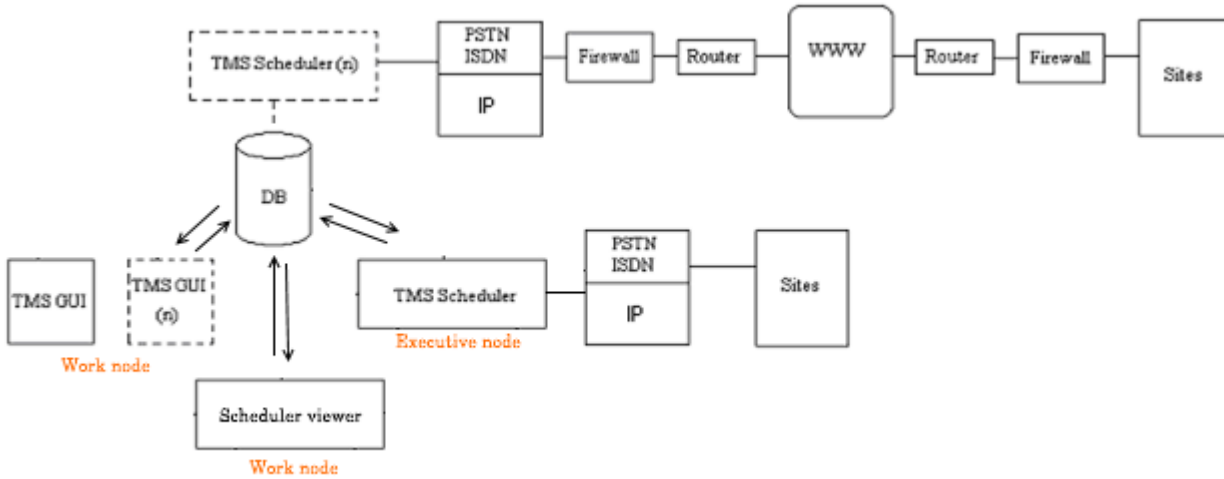
MANUAL

TABLE OF CONTENTS:

1. Introduction.....	4
1. 1. TMS Scalability	5
1. 1. 1. All on 1 machine	5
1. 1. 2. Graphical User Interface(s) on other machine(s).....	5
1. 1. 3. Fully distributed architecture	6
1. 2. The types of actions of TMS	7
2. Login screen.....	8
3. File menu.....	9
3. 1. Station selection	9
3. 2. Group selection	10
3. 3. Quick action	11
3. 4. Print.....	11
3. 5. Exit.....	11
3. 6. Icon bar	12
4. Schedule menu	13
4. 1. Add button	14
4. 2. Quick button	21
4. 3. Filter button	22
5. View menu	23
5. 1. Report.....	23
5. 2. Export	24
5. 3. Logging.....	25
5. 4. Tank status.....	26
5. 5. Fuel price overview.....	27
6. Edit menu	28
6. 1. Terminal/Dispenser management	28
6. 2. Commercial profiles.....	31
6. 2. 1. Save button.....	32
6. 2. 2. Linked sites button.....	33
6. 3. Fuel prices	34
6. 4. Pre-init wet fuel prices.....	35
6. 5. Site parameters	37
7. Define menu	38

7. 1. Station	38
7. 1. 1. Add button.....	39
7. 1. 2. Delete button.....	41
7. 1. 3. Reinitialise button.....	41
7. 1. 4. Filter button	42
7. 2. Groups	43
7. 2. 1. Add button.....	44
7. 2. 2. Delete button.....	44
7. 2. 3. Edit button	44
7. 3. Actions	45
7. 3. 1. Reports.....	45
7. 3. 2. Exports	47
7. 3. 3. System services.....	49
7. 3. 4. Quick	51
7. 3. 5. Call	53
8. Setup menu	54
8. 1. Formulas	54
8. 1. 1. Add button.....	55
8. 2. EFT Setup	55
8. 3. User management	56
8. 3. 1. Tab User Profiles.....	57
8. 3. 2. Tab Users	58
8. 3. 3. User management related information	58
9. Window menu	60
9. 1. Cascade	60
9. 2. Tile horizontally	60
9. 3. Tile vertically	60
10. Help menu	61
10. 1. About	61
Appendix A: REPORTING COMPONENTS	62
Appendix B: EXPORTS	66
Appendix C: SERVICES	76

1. Introduction



TMS is a universal tool for seamless dataflow between the company specific IT headquarters infrastructure and the individual petrol stations. Even though foreseen with user interface, it is mainly meant to work 24 hours a day, all year long, without any need for user interference, automating all the dataflow between the sites and the central, in both directions. It is meant to be able to accept data in any format and provide data in any format in order to fit into as much as possible into the existing headquarter IT infrastructure.

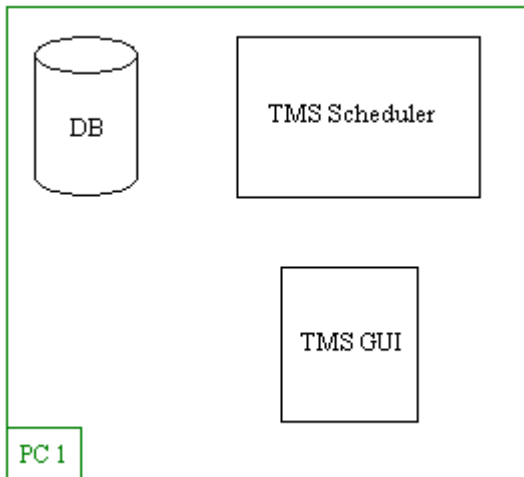
TMS Scheduler(s) continuously check(s) whether new actions have to be executed. It awaits triggers from various sources and acts upon them. Action scripts are located in the TMS database. Action scripts are managed through TMS GUI and or can be imported externally. Actions can be executed immediately or based on a time schedule, subject to an external or internal trigger. Actions are often recurrent, programmed to happen repeatedly (Every day but not in the weekend,...). Action completion can trigger other actions depending on the result of the action. Actions are station specific, or for a group of stations.

Various architectures of TMS installation are available. In its most distributed form, multiple user interfaces (TMS GUI) operate on client machines allowing users to control multiple action schedulers residing on other machines. More user interfaces are useful when various users need to supervise distinctive tasks (user possibilities can vary depending on attributed rights...). Multiple TMS Schedulers are useful in case of huge networks with hundreds of sites. The benefit of using more TMS Schedulers is increase of responsiveness, higher reliability and possibility to dedicate distinctive tasks to a specific TMS Scheduler. This can be needed in case of heterogeneous networks using various communication means only available from separate physical locations.

The TMS scheduler communicates with the sites using TCP/IP. Old networks using PSTN, ISDN and X25 are also supported. Volume of data transferred can be kept low in order to allow for fluent operation over communication networks with a very low throughput.

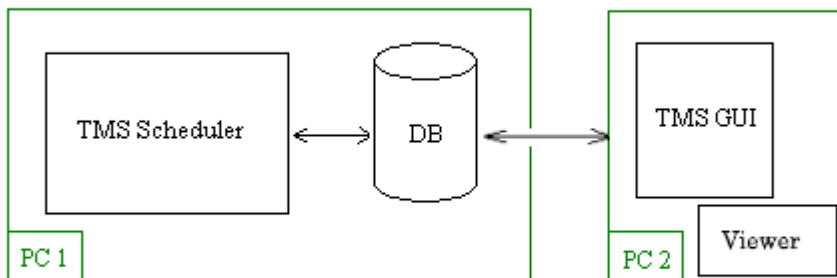
1. 1. TMS Scalability

1. 1. 1. All on 1 machine



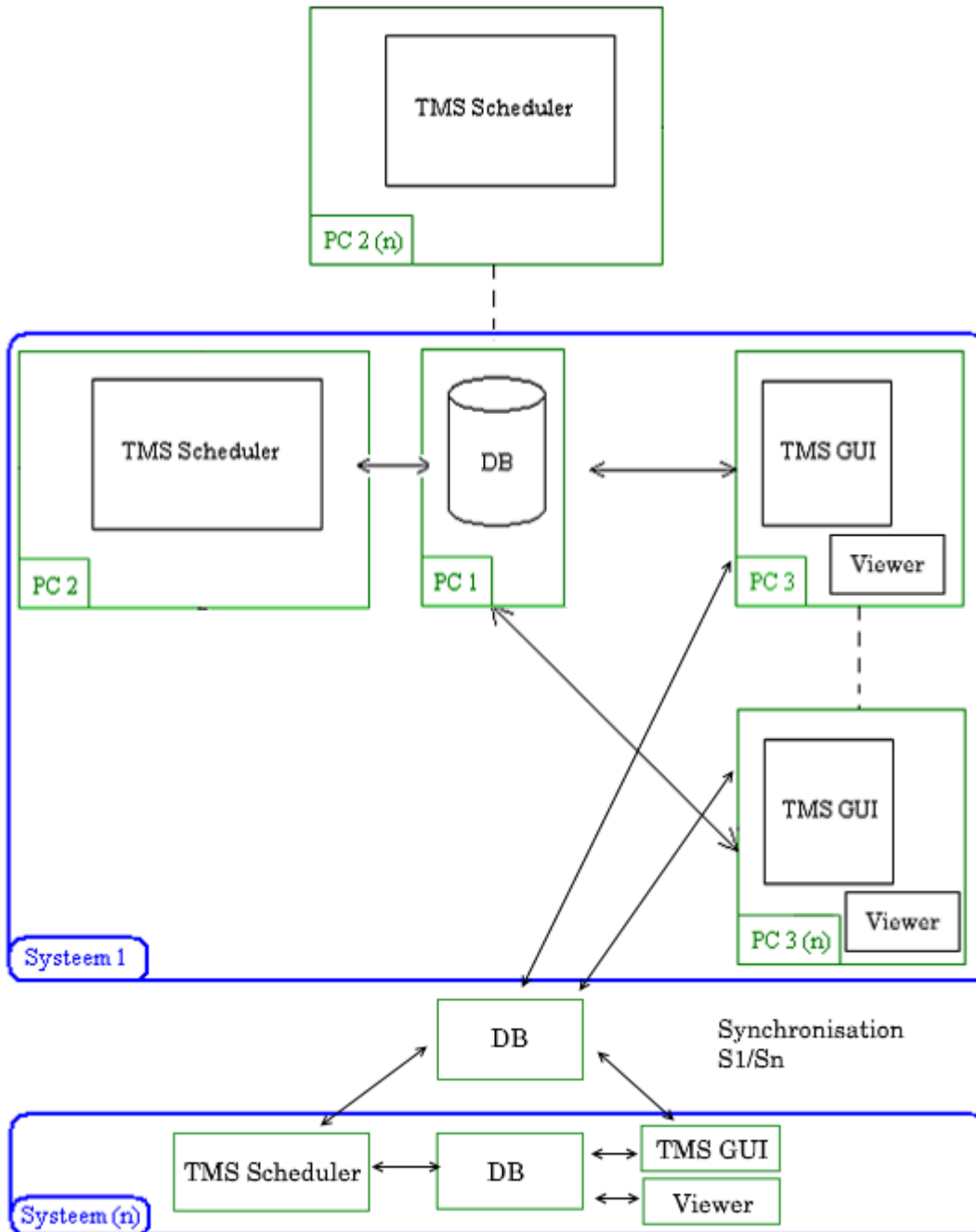
In this setup, the database (DB), the scheduler (TMS Scheduler) and the user interface (TMS GUI) are all installed on 1 machine.

1. 1. 2. Graphical User Interface(s) on other machine(s)



In this setup, the database (DB) and the scheduler (TMS Scheduler) are installed together. Other machines are used to run the user interface (TMS GUI and the scheduler viewer).

1. 1. 3. Fully distributed architecture



In this setup, the database is located on a server, schedulers are on separate machines and GUI's/viewers are integrated into user desktops.

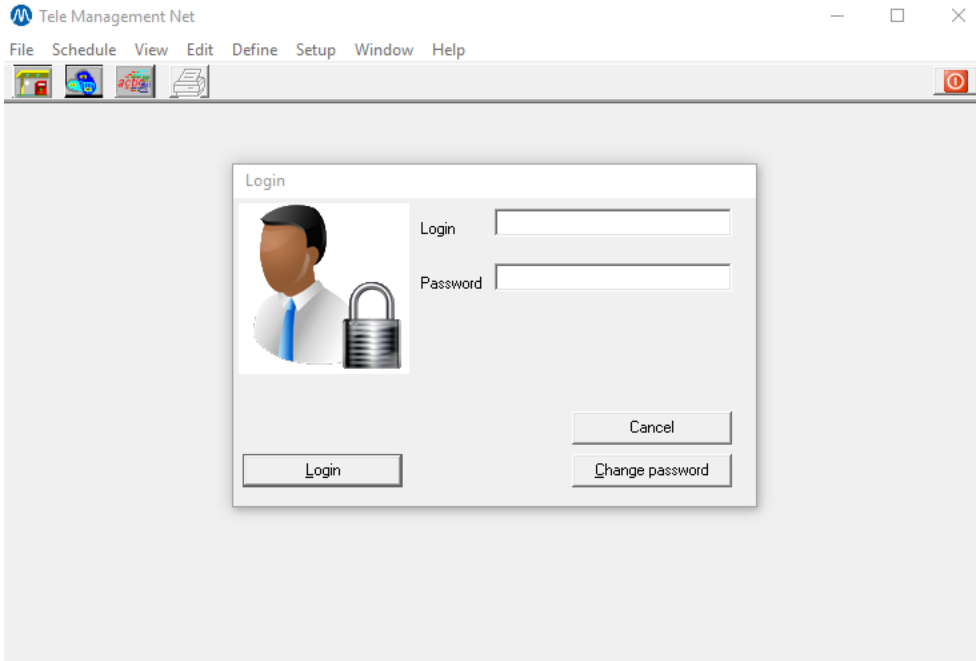
1. 2. The types of actions of TMS

TMS is a universal tool for fully automated seamless dataflow between the company specific IT headquarters infrastructure and the petrol stations. It converts and transfers data between headquarter and sites.

These are the different action types:

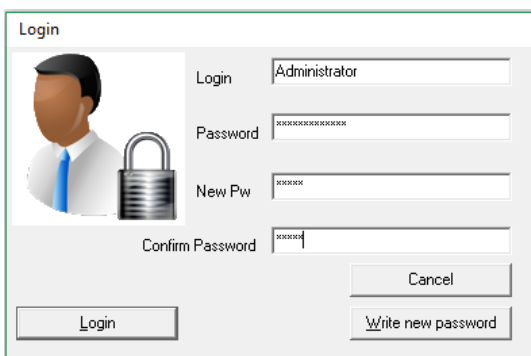
- CALL Script based data exchange with sites
- REPORT Generation of human readable reports of various kinds and formats
- EXPORT Generation of machine readable data of various kinds and formats
- SERVICE Data Import, conversion, processing and transport.
- QUIT Programmed temporary termination of TMS scheduler. Can be used for external backup

2. Login screen



After opening the GUI application, a login screen will pop up. It is mandatory to have a login and a password. (If you do not have a login and a password, you will have to contact an Administrator). Enter your login and password and confirm with the **[Login]** button.

To change your password, click the **[Change password]** button.

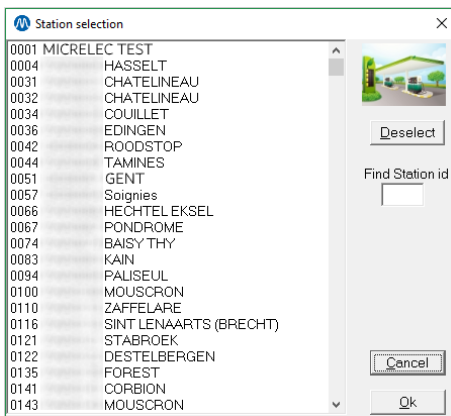
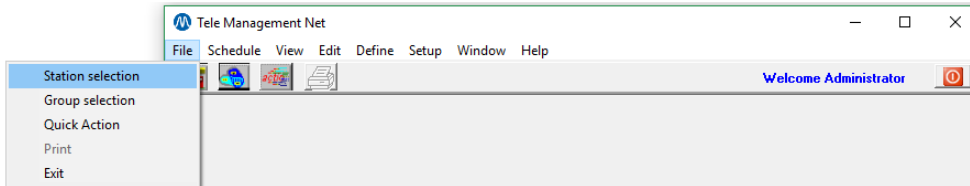


Enter a new password in the 'New pw' field and the 'Confirm password' field. Confirm the entry with the button **[Write new password]**. This button only appears after entering the previously mentioned fields.

NOTE: "Login" and "Password" are case sensitive.

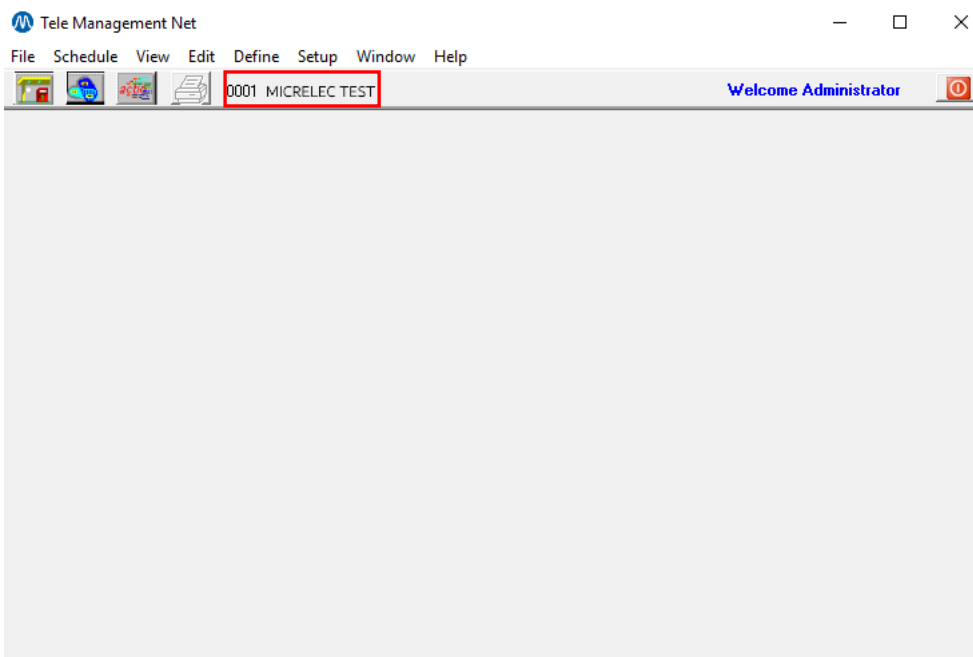
3. File menu

3. 1. Station selection

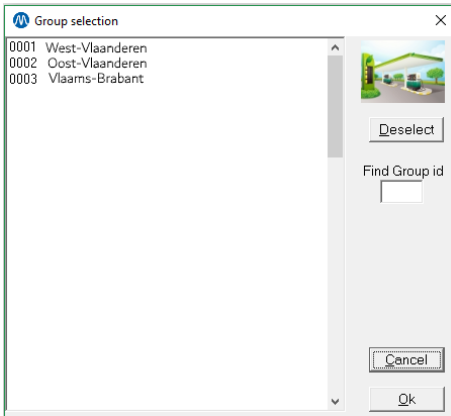
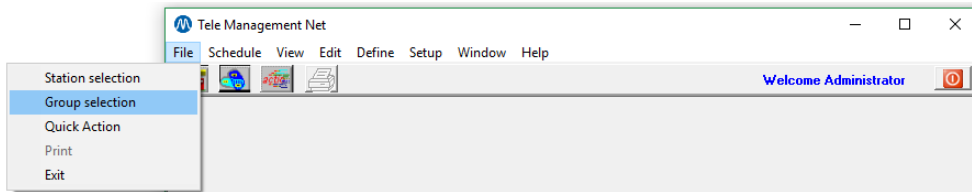


By selecting a station from this list, you will set up a default station. Every action is scheduled for this default station.

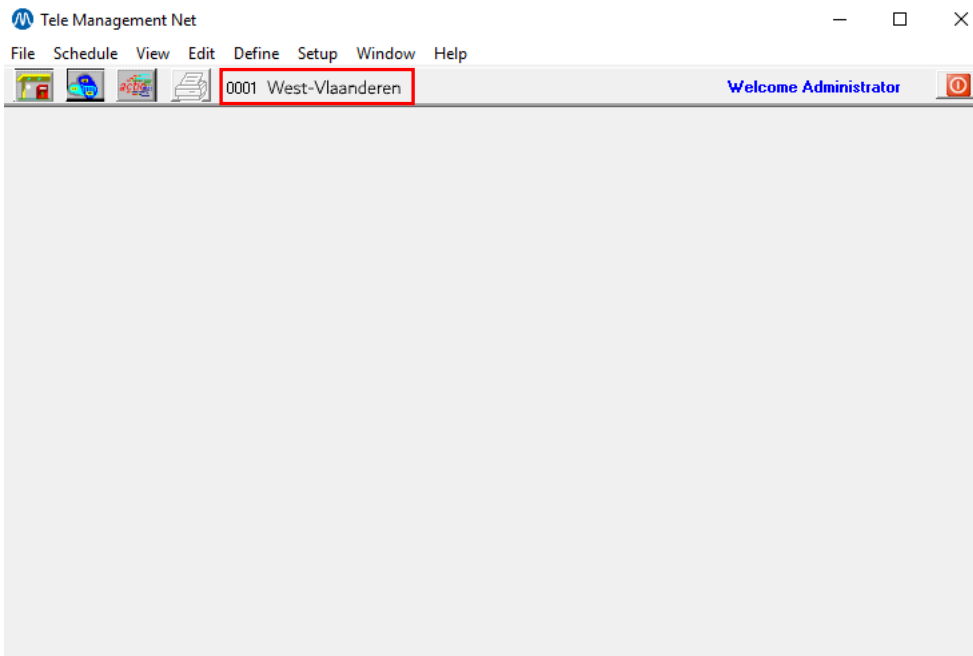
The selected default station will be visible on the TMS main screen, as shown below. Use the button **[Deselect]** to deselect a station as default station.



3. 2. Group selection

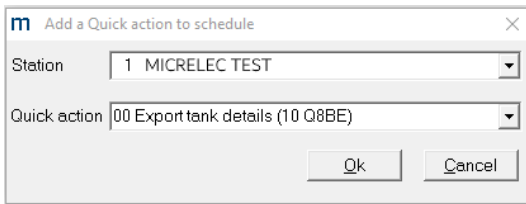
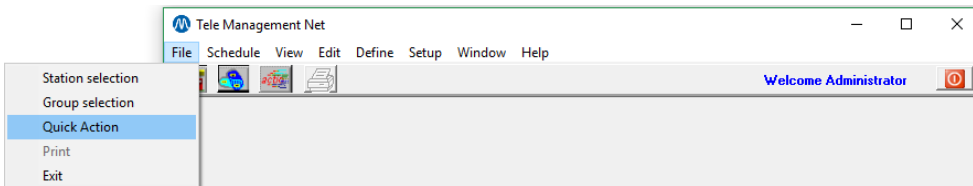


This function is similar to the one described in *1.1 Station selection*. By selecting a group from this list, you will set up a default group. Every action is scheduled for this default group of stations. The selected default group will be visible on the TMS main screen, as shown below. Use the button **[Deselect]** to deselect a group.



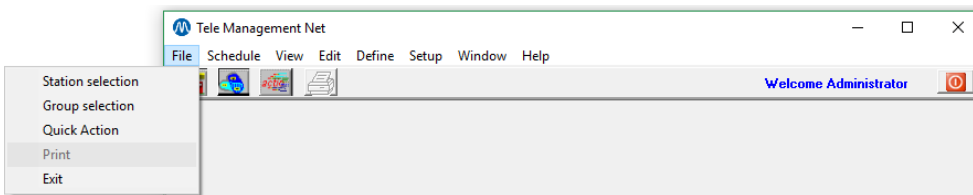
NOTE: this is the only way to define an action for a group of station.

3. 3. Quick action



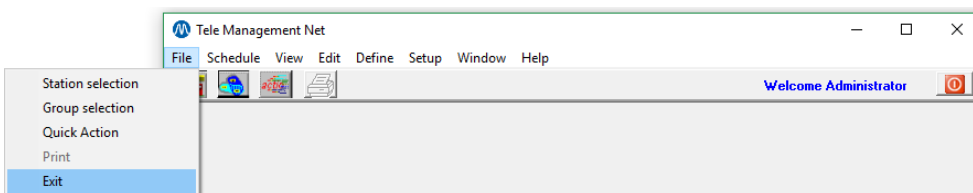
This is a fast way of defining an action (or several) for a certain station. The actions in the dropdown list have been created by the user (see: 5.3.4 Quick). This is a one-time action for immediate scheduling.

3. 4. Print



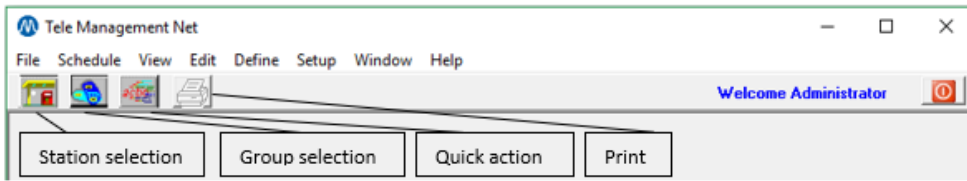
When a report, export, or logging file is shown, this line will be enabled. This function allows you to print these types of files. See also 3.1 Report, 3.2 Export, 3.3 Logging.

3. 5. Exit



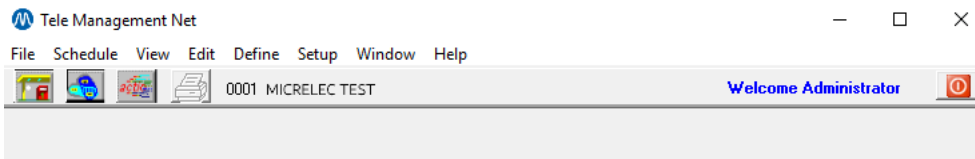
This function allows you to exit the TMS application.

3. 6. Icon bar



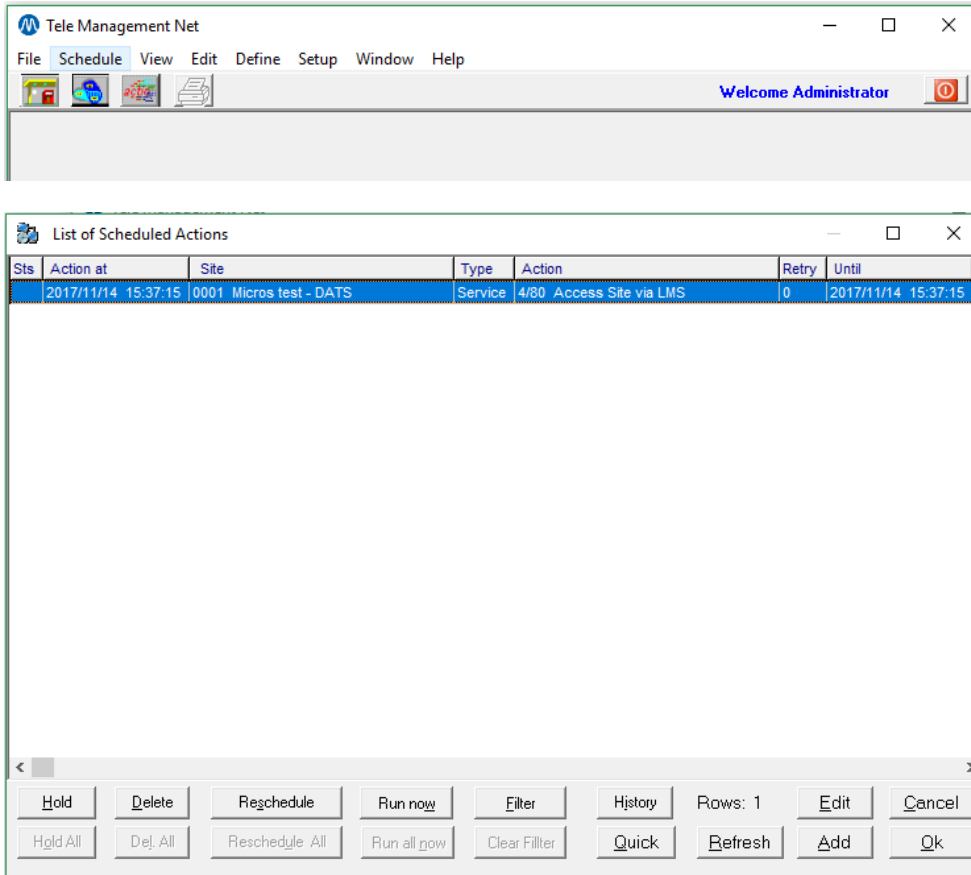
The buttons in the icon bar correspond to each line in the file menu.

When a certain station or group has been selected, the number and name of this station/group appears in this bar.



4. Schedule menu

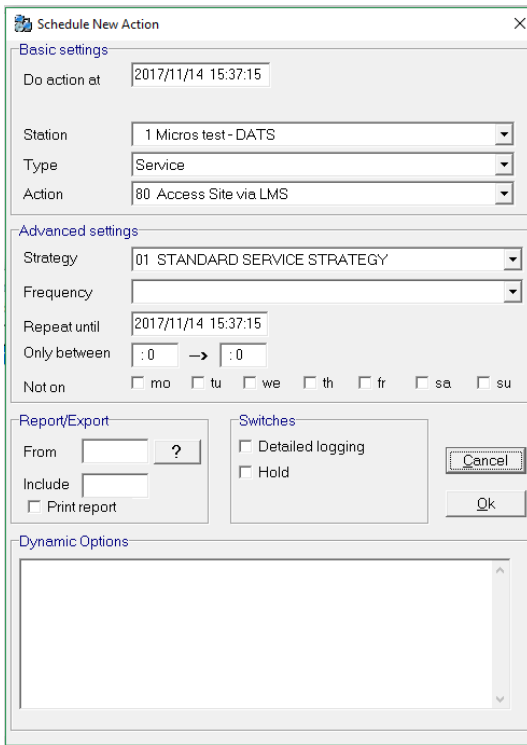
To access the list of scheduled actions, open the schedule menu. The screen below will appear.



- **[Add]**: this button allows you to add an action to this list.
- **[Edit]**: this button allows you to edit an existing action in this list.
- **[Hold]**: this button allows you to put a scheduled action on hold, or to activate it again. When an action is on hold, it is marked with a STOP sign at the beginning of the line.
- **[Delete]**: this button allows you to delete the selected action(s). Confirm with the **[OK]** button.
- **[Reschedule]**: this button allows you to reschedule the selected action(s) depending on the way this action is defined.
- **[Filter]**: this button allows you to filter certain actions.
- **[History]**: this button allows you to consult an action's history. Select an scheduled action from the list and click this button.
- **[Quick]**: this button allows you to add a quick action to the schedule list.
- **[Refresh]**: this button allows you to refresh the list of actions and removes the actions that have already been executed and that, therefore, do not need to remain in this list.
- **[Cancel]**: this button allows you to close the schedule window.

The **[Add]**, **[Quick]** and **[Filter]** buttons are further explained below.

4. 1. Add button



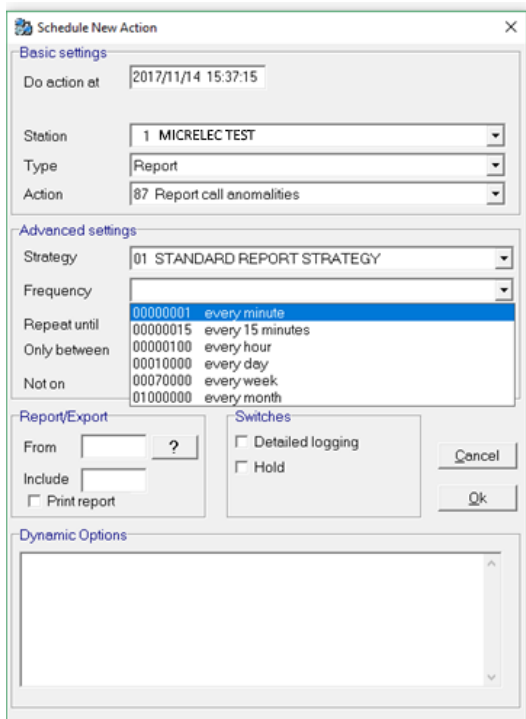
Upon clicking the **[Add]** button, a pop-up window appears. In the section 'Basic settings', the following options are available:

- Do action at: the date and time at which the action is going to be executed. If the date and time take place before the current date and time, the action will be executed immediately.
- Station: the station for which the action will be executed.
- Type: type of action. There are 5 types:
 - Call
 - Report: for more information about Reports see Appendix A.
 - Export: for more information about Exports see Appendix B.
 - Quit: to close the scheduler.
 - Service: for more information about Services see Appendix C.
- Action: the actual action. These are different according to the selected type in the previous step.

To add reports see 7.3.1 Reports.

To add exports see 7.3.2 Exports.

To add services see 7.3.3 System services.



The next block of settings are the 'Advanced settings'. On the screenshot above, an anomalies report is added for station 1 which is executed at the specified time.

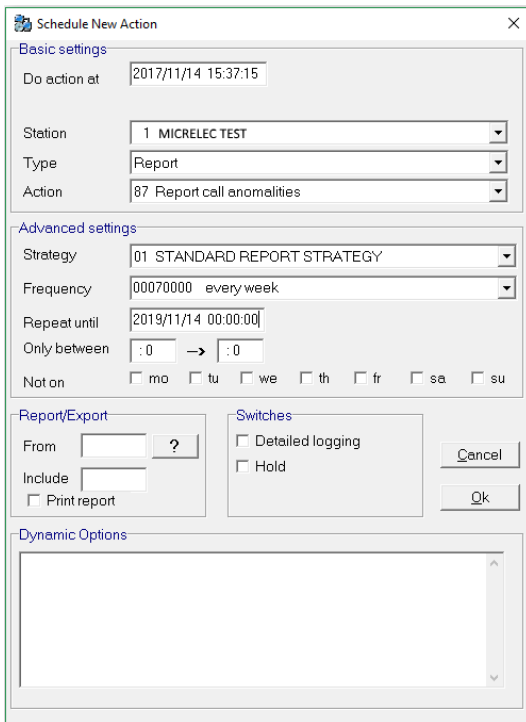
The 'Frequency' field shows when the action has to be executed:

- Every minute
- Every 15 minutes
- Every hour
- Every day
- Every week
- Every month

The 'Frequency' field uses the following format MMDDhhmm:

- mm: number of minutes (can go up to 60)
- hh: number of hours (can go up to 24)
- DD: number of days (can go up to 31)
- MM: number of months (can go up to 12)

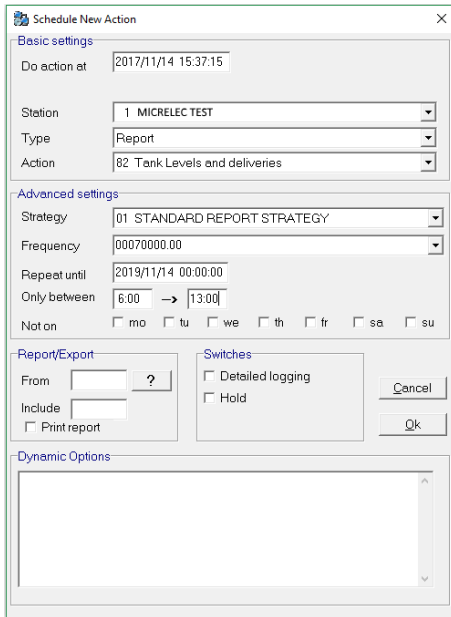
For example when an action needs to be executed every 2 days, 3 hours and 20 minutes, the value in the 'Frequency' field has to be 20320.



When you specify a frequency, it is mandatory to specify the 'Repeat until' field. Here, you will determine for how long TMS has to execute this action taking into account the frequency that was set in the previous field.

Here are some examples concerning the frequency and date/time:

1.

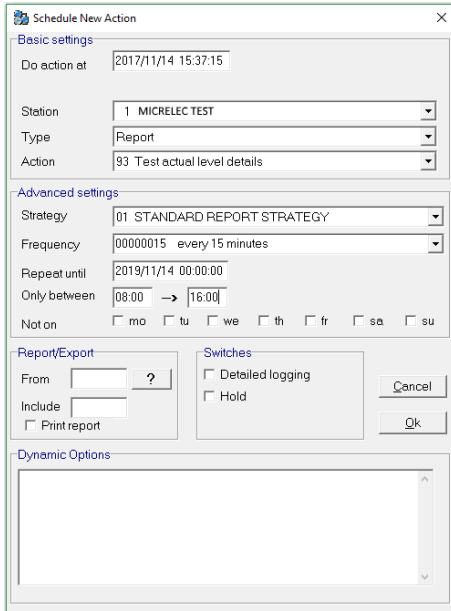


The screenshot shows the 'Schedule New Action' dialog box with the following settings:

- Basic settings:**
 - Do action at: 2017/11/14 15:37:15
 - Station: 1 MICRELEC TEST
 - Type: Report
 - Action: 82 Tank Levels and deliveries
- Advanced settings:**
 - Strategy: 01 STANDARD REPORT STRATEGY
 - Frequency: 00070000.00
 - Repeat until: 2019/11/14 00:00:00
 - Only between: 6:00 → 13:00
 - Not on: mo tu we th fr sa su
- Report/Export:**
 - From: [] ?
 - Include: []
 - Print report
- Switches:**
 - Detailed logging
 - Hold
- Dynamic Options:** [Empty list box]

In the example above, the user specified to make a report including tank levels and deliveries for station 1. Note that the 'Only between' fields have also been specified.

2.

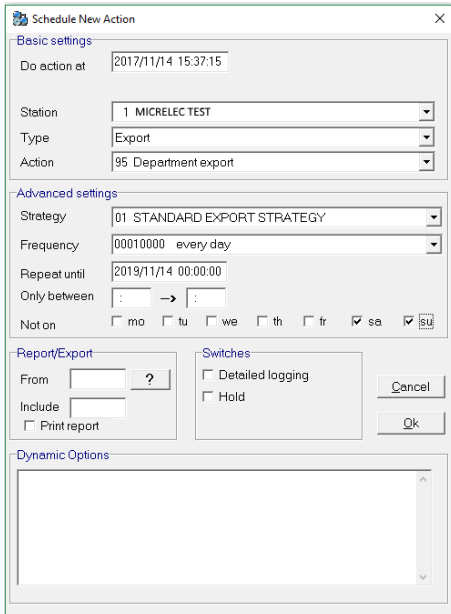


The screenshot shows the 'Schedule New Action' dialog box with the following settings:

- Basic settings:**
 - Do action at: 2017/11/14 15:37:15
 - Station: 1 MICRELEC TEST
 - Type: Report
 - Action: 93 Test actual level details
- Advanced settings:**
 - Strategy: 01 STANDARD REPORT STRATEGY
 - Frequency: 00000015 every 15 minutes
 - Repeat until: 2019/11/14 00:00:00
 - Only between: 08:00 → 16:00
 - Not on: mo tu we th fr sa su
- Report/Export:**
 - From: [] ?
 - Include: []
 - Print report
- Switches:**
 - Detailed logging
 - Hold
- Dynamic Options:** [Empty list box]

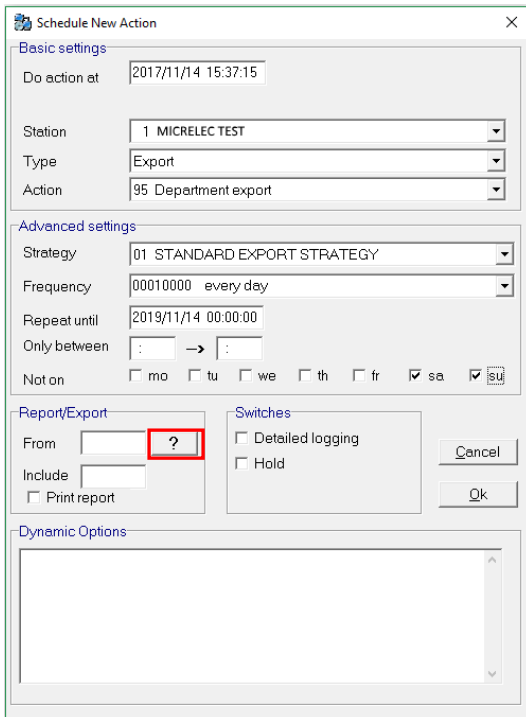
In this example, the selected action needs to be executed every 15 minutes every day from 08:00 until 16:00.

3.



In this example, the user specified a department export for station 1. Note that the 'Not on' field has also been specified. This action will be executed every day except on Saturday and Sunday.

The user can also specify to create a report or export for a certain number of cutovers by clicking the [?] button in the 'Report/Export' section.



Schedule New Action

Basic settings

Do action at: 2017/11/14 15:37:15

Station: 1 MICRELEC TEST

Type: Export

Action: 95 Department export

Advanced settings

Strategy: 01 STANDARD EXPORT STRATEGY

Frequency: 00010000 every day

Repeat until: 2019/11/14 00:00:00

Only between: : → :

Not on: mo tu we th fr sa su

Report/Export

From: [?]

Include: []

Print report

Switches

Detailed logging

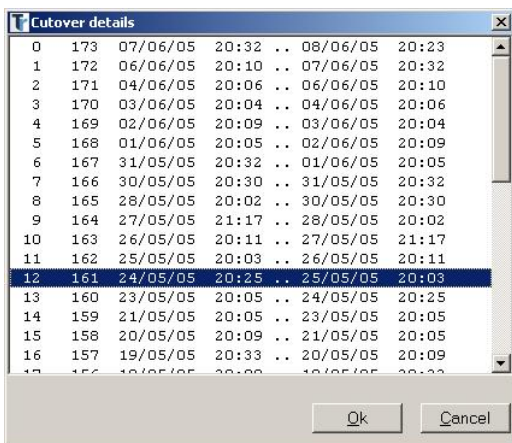
Hold

Buttons: Cancel, Ok

Dynamic Options

The window 'Cutover details' will appear. It contains a list of all the cutovers with a start and end date/time.

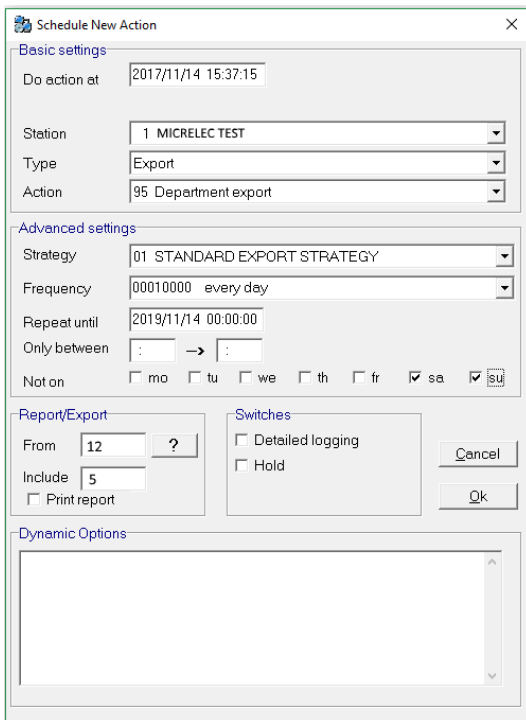
In the example below, an export file has to be created for all the cutovers starting from 24/05/2005 until (and including) a certain date. Therefore, make sure to select the cutover number 161 to include the 24/05 report.



ID	Cutover No.	Start Date	Start Time	End Date	End Time
0	173	07/06/05	20:32	08/06/05	20:23
1	172	06/06/05	20:10	07/06/05	20:32
2	171	04/06/05	20:06	06/06/05	20:10
3	170	03/06/05	20:04	04/06/05	20:06
4	169	02/06/05	20:09	03/06/05	20:04
5	168	01/06/05	20:05	02/06/05	20:09
6	167	31/05/05	20:32	01/06/05	20:05
7	166	30/05/05	20:30	31/05/05	20:32
8	165	28/05/05	20:02	30/05/05	20:30
9	164	27/05/05	21:17	28/05/05	20:02
10	163	26/05/05	20:11	27/05/05	21:17
11	162	25/05/05	20:03	26/05/05	20:11
12	161	24/05/05	20:25	25/05/05	20:03
13	160	23/05/05	20:05	24/05/05	20:25
14	159	21/05/05	20:05	23/05/05	20:05
15	158	20/05/05	20:09	21/05/05	20:05
16	157	19/05/05	20:33	20/05/05	20:09

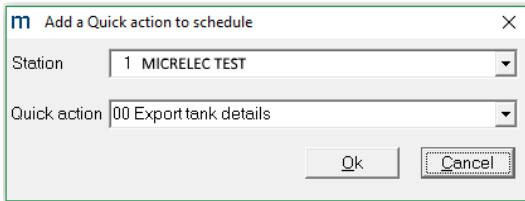
Buttons: Ok, Cancel

In the field 'Include' (see example below), it is also mandatory to enter the amount of cutovers that are needed in the export file.



The comment field in the 'Dynamic Options' section can be used to enter remarks for other users to read. For example, when a certain action needs to be put on hold, the user can enter a reason and his username in this field. This is useful when different users are using the TMS to schedule actions.

4. 2. Quick button



Dialog box titled "Add a Quick action to schedule". It contains two dropdown menus: "Station" with the value "1 MICRELEC TEST" and "Quick action" with the value "00 Export tank details". At the bottom, there are "Ok" and "Cancel" buttons.

In the example above, the quick action “00 Export tank details” for station 1 will be added to the scheduler.

This quick action contains a call and an export. When it is added to the scheduler, there are 2 actions appearing in the list and being executed.

- The first action is a call: ‘Req actual tank details’ which requests the data.
- The second action is an export: ‘Last tank readings, 15 tanks’ which makes the export.

To add quick actions see 5.3.4 Quick.

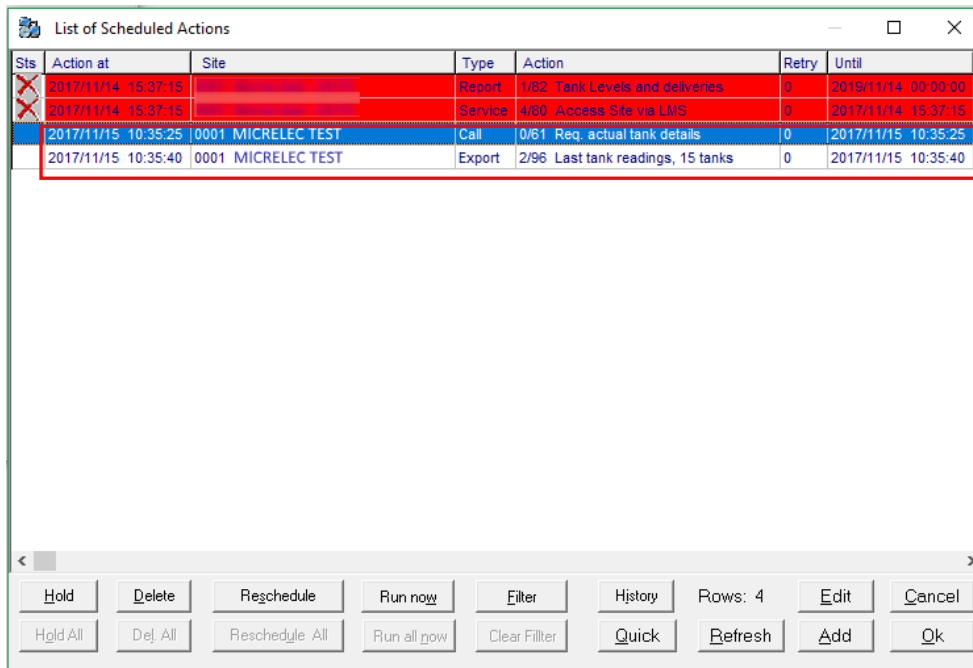
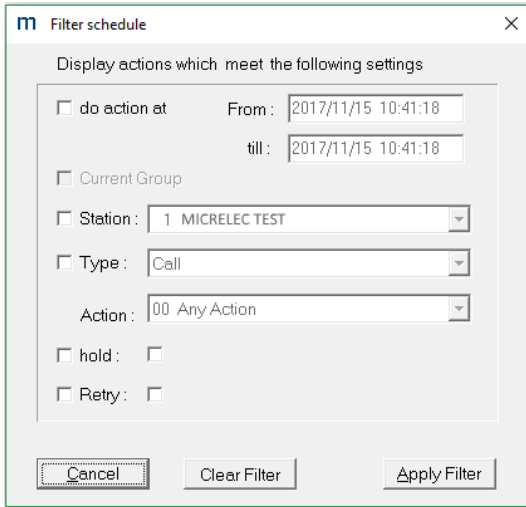


Table titled "List of Scheduled Actions" showing a list of scheduled tasks. The table has columns: Sts, Action at, Site, Type, Action, Retry, and Until. The third and fourth rows are highlighted in blue and red respectively, indicating the actions generated from the quick action.

Sts	Action at	Site	Type	Action	Retry	Until
X	2017/11/14 15:37:15		Report	1/82 Tank Levels and deliveries	0	2019/11/14 00:00:00
X	2017/11/14 15:37:15		Service	4/80 Access Site via LMS	0	2017/11/14 15:37:15
	2017/11/15 10:35:25	0001 MICRELEC TEST	Call	0/81 Req. actual tank details	0	2017/11/15 10:35:25
	2017/11/15 10:35:40	0001 MICRELEC TEST	Export	2/96 Last tank readings, 15 tanks	0	2017/11/15 10:35:40

At the bottom of the window, there is a toolbar with buttons: Hold, Delete, Reschedule, Run now, Filter, History, Rows: 4, Edit, Cancel, Hgld All, Del. All, Reschedule All, Run all now, Clear Filter, Quick, Refresh, Add, and Ok.

4. 3. Filter button



When many actions have already been scheduled, it can be useful to use the filter to search for certain actions. There are 4 types of criteria:

- Do action at: specify the date and time for the actions that you want to see.
- Station: specify a station. The application will filter all the actions for this station.
- Type: specify a type of action and the action itself. The application will filter all the actions for the selection.
- Hold: specify whether you want to see all the actions on hold or not. Tick the box that comes after 'Hold'.

First, tick the boxes of the criteria you wish to use. Then specify the filter as explained above. You can combine different filters.

The result of the filter is shown in the scheduler. The **[Filter]** buttons is now red. This is just an indication to show whether the filter is being used or not.

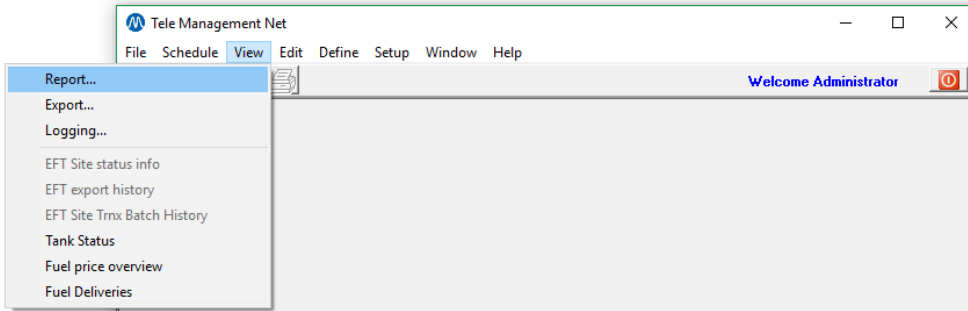


When you have used the filter, the buttons **[Hold All]**, **[Del. All]** and **[Reschedule All]** are available. These buttons are similar to the ones above:

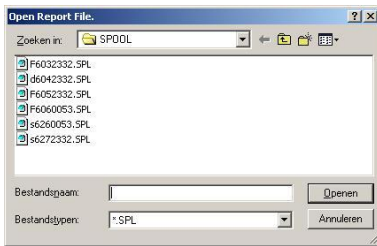
- **[Hold All]**: this button allows you to put all the actions on hold (or to reactivate them).
- **[Del. All]**: this button allows you to delete all the actions. Confirm by clicking the **[OK]** button.
- **[Reschedule All]**: this button allows you to reschedule all possible actions.

5. View menu

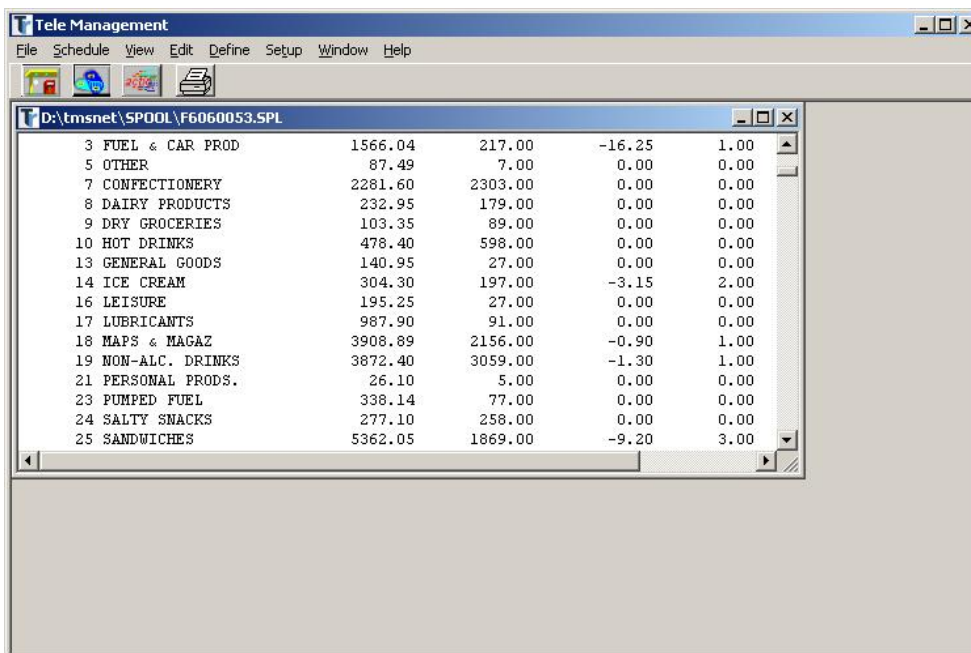
5. 1. Report



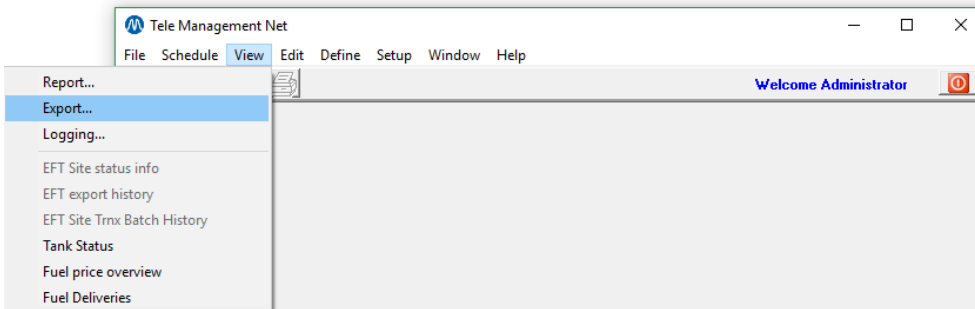
When you click the **[Report]** button in the View menu, you will be able to open a report file. Report files are located in the \spool directory from TMS.



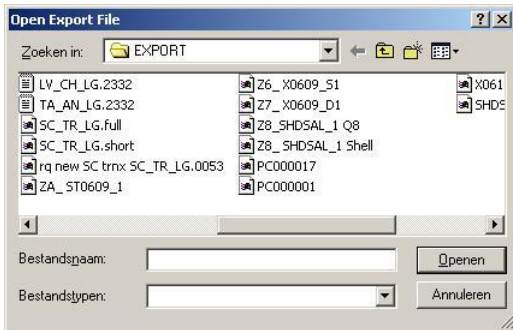
Each report file has a specific starting character. To make reports see 7.3.1. Reports. After opening a report file, the content appears in the new window. Note that the printer icon is enabled now. You are now able to print this file.



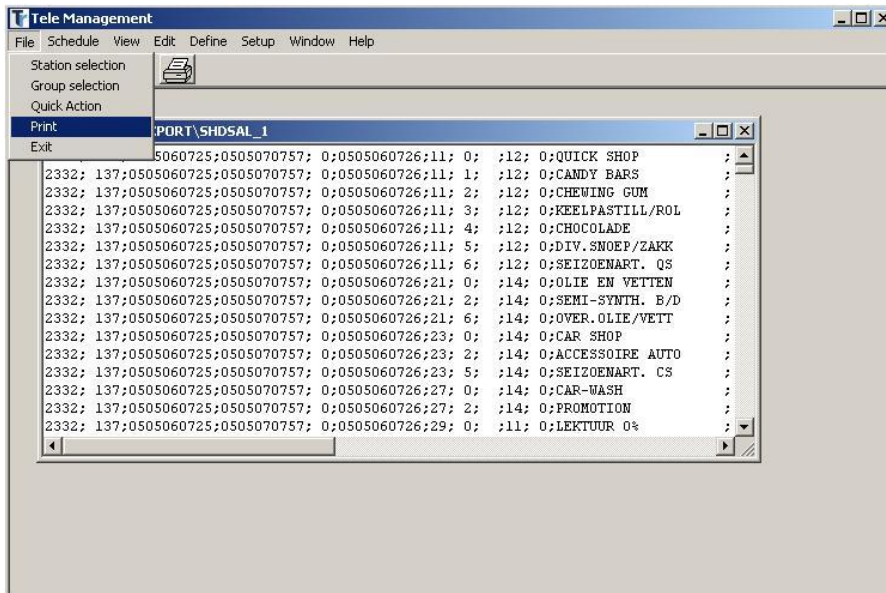
5. 2. Export



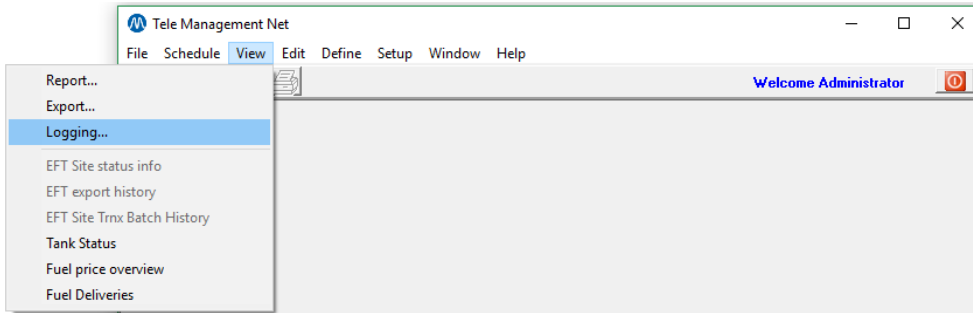
After clicking the **[Export]** button in the View menu, you will be able to open an export file. Export files are located in the \export directory from TMS.



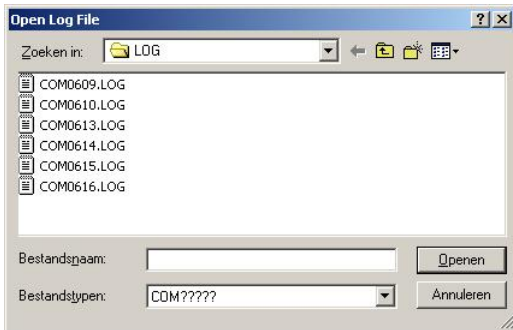
Each export file has a specific starting character. To make export see 7.3.2. Exports. This is a preview of an export file. Note that the printer icon is enabled now. You are now able to print this file.



5. 3. Logging

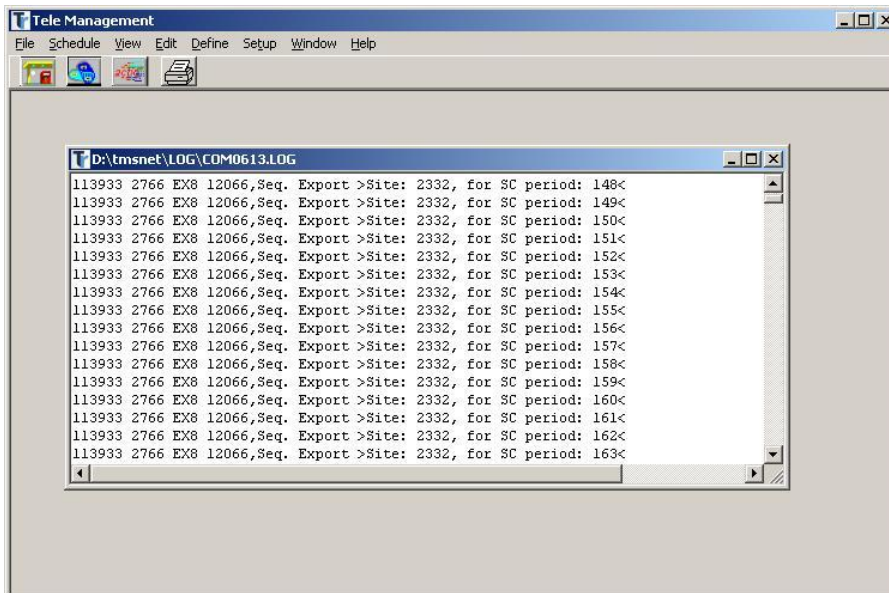


After clicking the **[Loggin]** button in the View menu, you will be able to open a log file. Log files are located in the log directory from TMS.

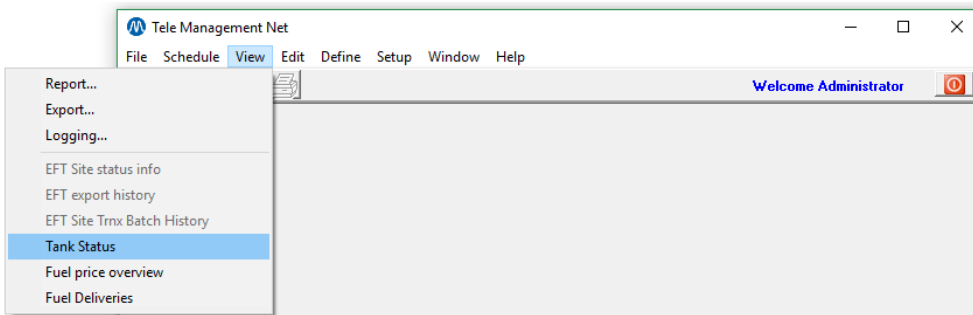


Each log file has a specific starting character.

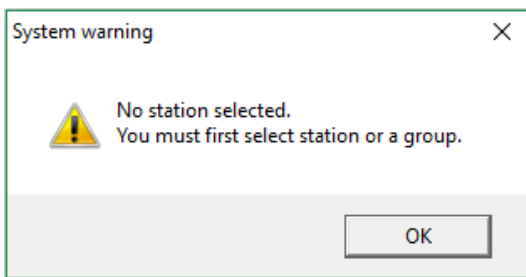
This is a preview of an log file. Note that the printer icon is enabled now. You are now able to print this file.



5. 4. Tank status

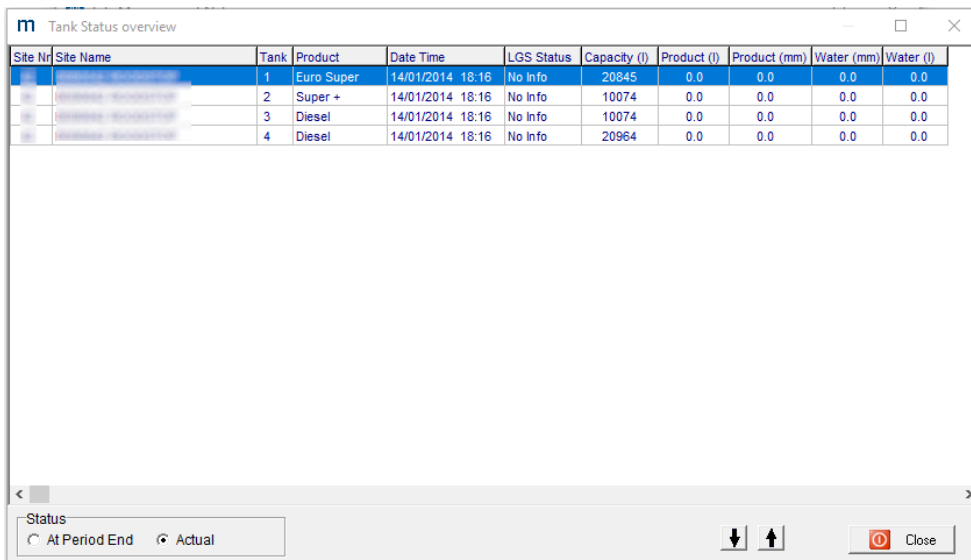


After clicking the **[Tank status]** button in the View menu, a system warning will appear when you have not selected a station first. Select a station following the steps described in 3.1. Station selection.



After selecting a station, the station number and name are displayed in the icon bar.

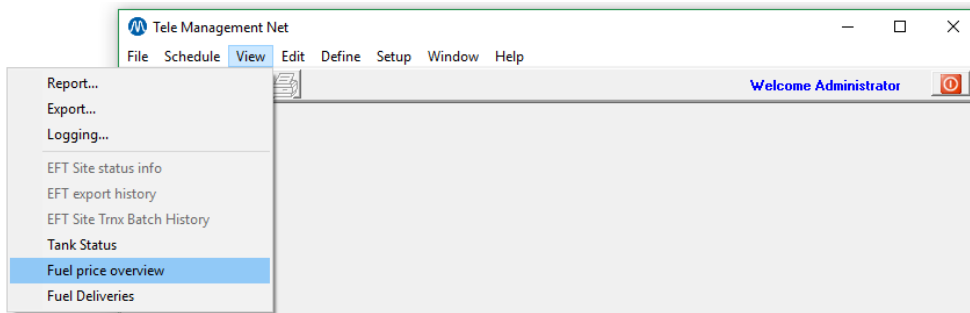
After clicking the **[Tank status]** button, a pop-up window will appear showing all info on the tanks present on site. See example below.



Site Nr	Site Name	Tank	Product	Date Time	LGS Status	Capacity (l)	Product (l)	Product (mm)	Water (mm)	Water (l)
1		1	Euro Super	14/01/2014 18:16	No info	20845	0.0	0.0	0.0	0.0
2		2	Super +	14/01/2014 18:16	No info	10074	0.0	0.0	0.0	0.0
3		3	Diesel	14/01/2014 18:16	No info	10074	0.0	0.0	0.0	0.0
4		4	Diesel	14/01/2014 18:16	No info	20964	0.0	0.0	0.0	0.0

If this screen is empty, you should start a call action to retrieve data from the station.

5. 5. Fuel price overview

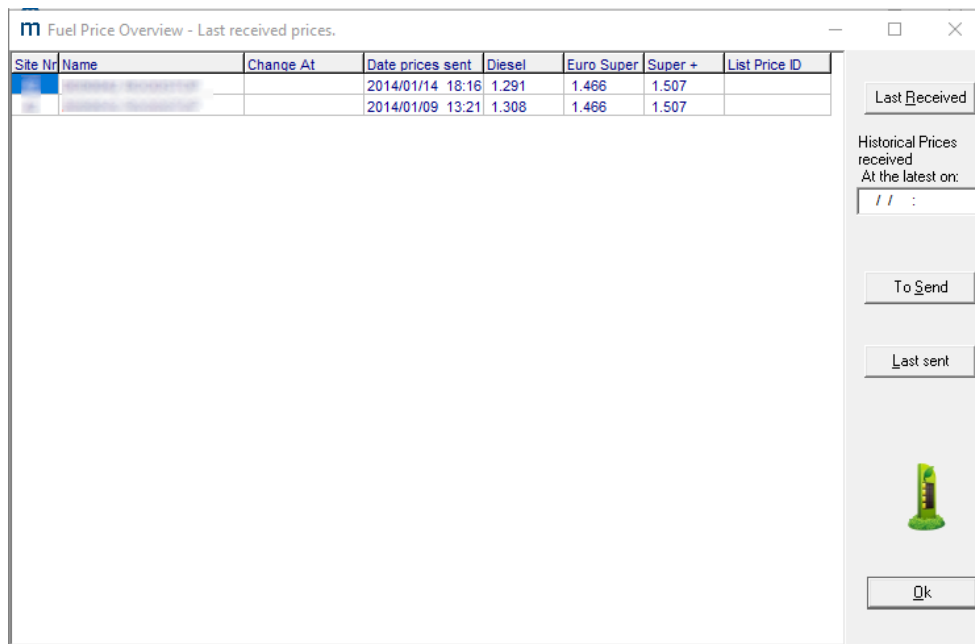


First, select a station or a group.

After clicking the **[Fuel price overview]** button in the View menu, a pop-up window will appear showing the fuel price overview (last received prices). See example below.

Explanation of the buttons:

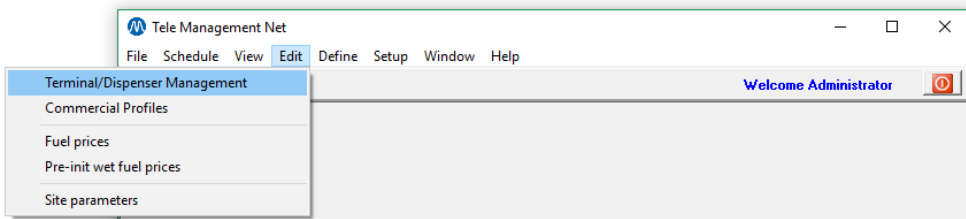
- Last received: this button allows you to see the last received fuel prices overview. When the field 'Historical prices received at the latest on' is completed, the last received fuel prices overview starting from this date/time are shown.
- To send: this button allows you to see the last 'To send' fuel prices overview.
- Last sent: this button allows you to see the last 'Last send' fuel prices overview.



6. Edit menu

6. 1. Terminal/Dispenser management

This function allows you to enable/disable terminals (OPT, Attended, Console, Test) and dispensers even at nozzle level. This can be useful when a dispenser is broken or a hose needs to be replaced. The SC configuration needs to be available in order to make changes on site.



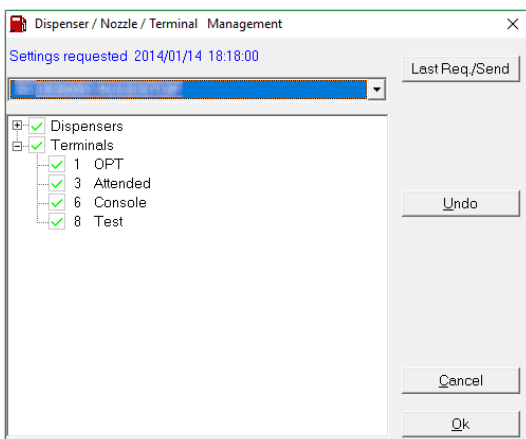
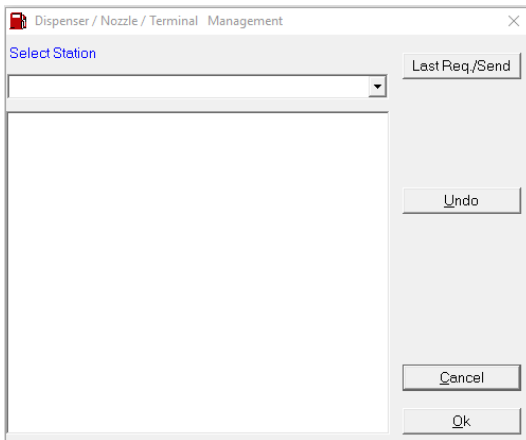
After the clicking the **[Terminal/Dispenser Management]** button in the Edit menu, the windows below pop up. If you had not selected a station before, you can select one in the new window using the drop-down list below 'Select station'.

The button **[Last Req./Send]** allows you to switch between the last send and the last requested information. The text at the top of the window specifies if the information shown is the requested information or the send information.

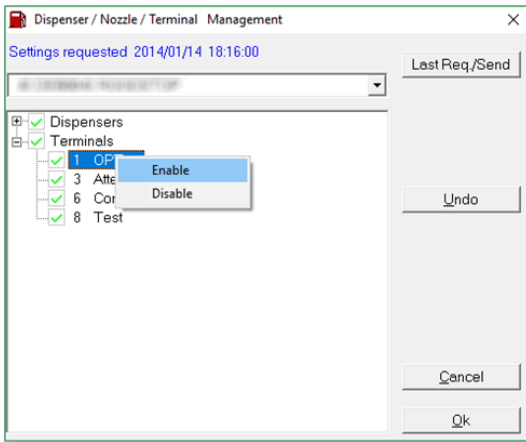
The button **[Undo]** allows you to undo all the changes since the last save.

The button **[Cancel]** allows you to close this window.

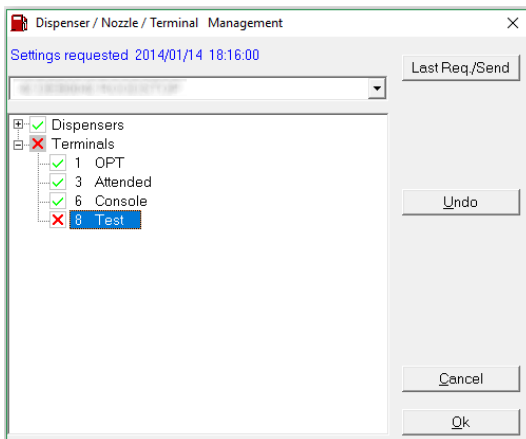
When making changes, confirm the modification with the button **[Ok]**.



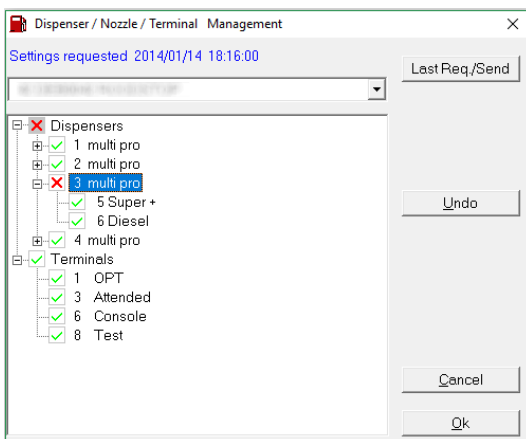
To enable/disable a terminal or dispenser, select the correct line. Then right click to enable or disable, like in the example below.



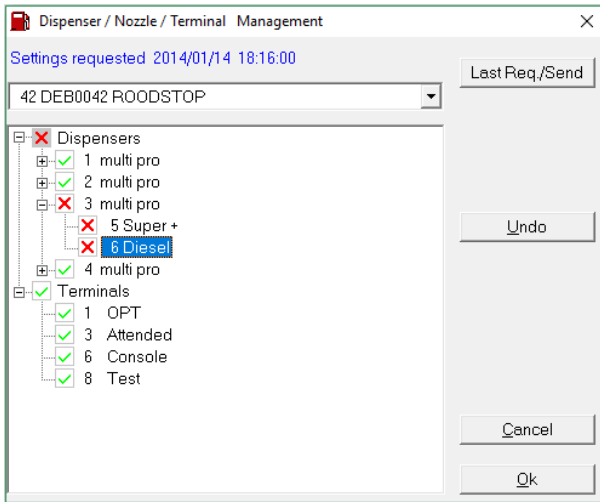
When a terminal/dispenser is disabled, it will be preceded by an **X**. In the example below, 'Terminals' are also marked with an **X** on a grey background. This means that a sub item is disabled.



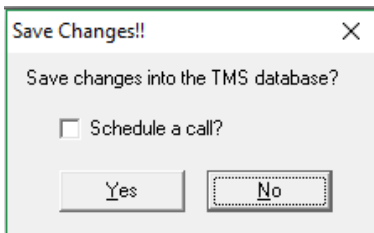
It is possible to disable an entire dispenser or terminal, as shown below (3 multi pro is disabled). Make sure to select the main item, instead of a sub item.



When all nozzles from a dispenser are disabled, an **X** (without a grey background) appears next to that dispenser. All the nozzles have to be enabled again one by one in order to enable the entire dispenser.



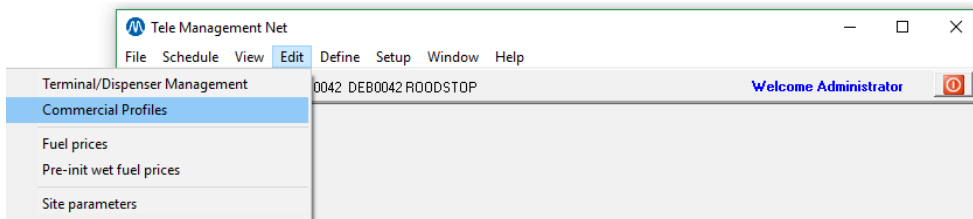
Click the **[OK]** button to confirm the modifications. TMS will ask if the changes should be saved in the database. When you click **[Yes]**, the changes will be saved in the database but they will not be sent to the station. You can use a call action – Send act/blck dispen,terminal to send the information to the station. You can also check the checkbox ‘Schedule a call?’ to schedule a call action on hold.



WARNING: Dispensers or terminals blocked by TMS can only be unblocked by TMS!

6. 2. Commercial profiles

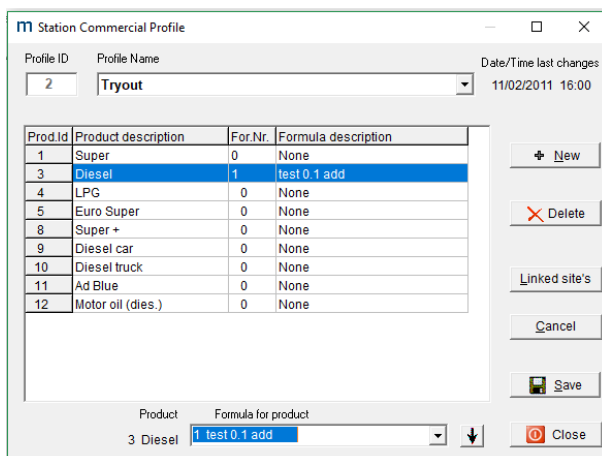
Commercial profiles are an easy way to activate a variety of prices on sites depending on certain formulas based on a set of official prices.



After clicking **[Commercial profiles]** in the Edit menu we see the window as below.

- **[New]**: this button allows you to add a new commercial profile.
- **[Delete]**: this button allows you to delete the selected profile.
- **[Linked sites]**: this button allows you to show the sites linked to this profile.
- **[Cancel]**: this button allows you to cancel the change you made or to leave the window.
- **[Save]**: this button allows you to save a new or existing profile.
- **[Close]**: this button allows you to close the commercial profiles window.

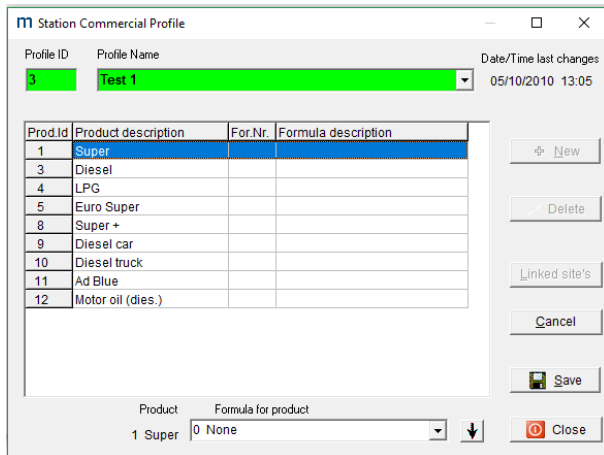
See also 8.1. Formulas.



6. 2. 1. Save button

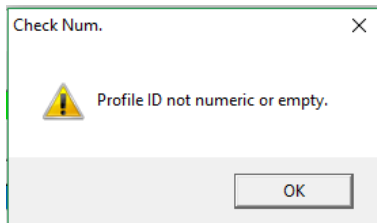
When you want to create a new commercial profile, you will need to enter a profile ID (this is a number) and a profile name. Then, you can select which formula you want to use for the different products: select the product and select a formula from the drop-down list at the bottom of the window.

To make formulas see 8.1. Formulas.



Prod.Id	Product description	For.Nr.	Formula description
1	Super		
3	Diesel		
4	LPG		
5	Euro Super		
8	Super +		
9	Diesel car		
10	Diesel truck		
11	Ad Blue		
12	Motor oil (dies.)		

When you fail to enter a profile ID, the following error message will appear.



After entering all the correct info, click the **[Save]** button to save the commercial profile.

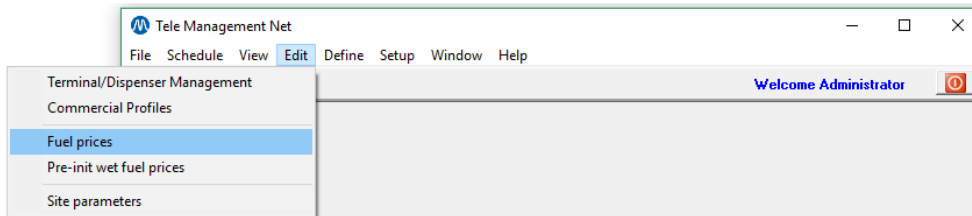
6. 2. 2. Linked sites button

When selecting a commercial profile, you can click the **[Linked sites]** button. A new window pops up with a list of all the stations linked to this profile.

To add a commercial profile to a station see 7.1. Station.

6. 3. Fuel prices

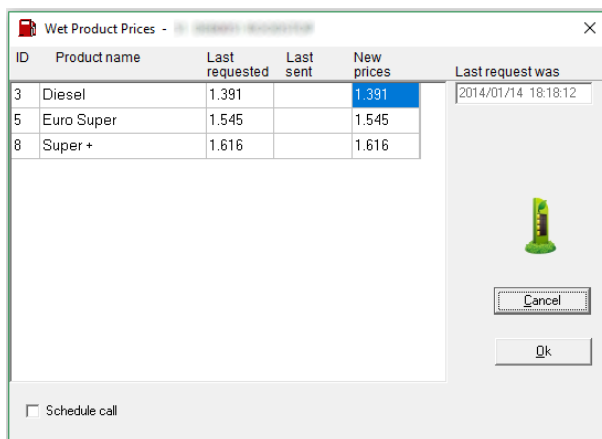
This function is used to send fuel prices to a site. When only 1 station has been selected, the fuel prices as entered will be adjusted. When a group of stations has been selected, the fuel prices will be send taking into account the commercial profiles each station is linked to.



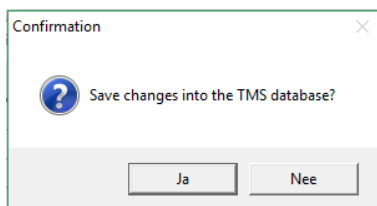
First, select a station or a group.

After clicking [**Fuel prices**] in the menu Edit, the window below pops up.

This window shows the last requested fuel prices, the last sent fuel prices, and the date and time when they were last requested.



When the prices for a certain station need to be changed, you can enter the new prices in the last column. Confirm with [**Ok**]. TMS asks if the changes need to be saved in the database. When clicking [**Yes**], the prices are saved in the database but they are not updated at the station. A call action – Send wet prices needs to be scheduled to send the new prices stored in the database to the specified station.

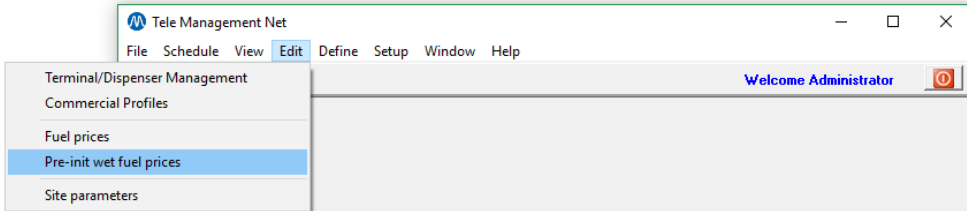


It is also possible to send the prices to the station immediately with checking the checkbox 'Schedule call' at the button of the window as shown in the example above.

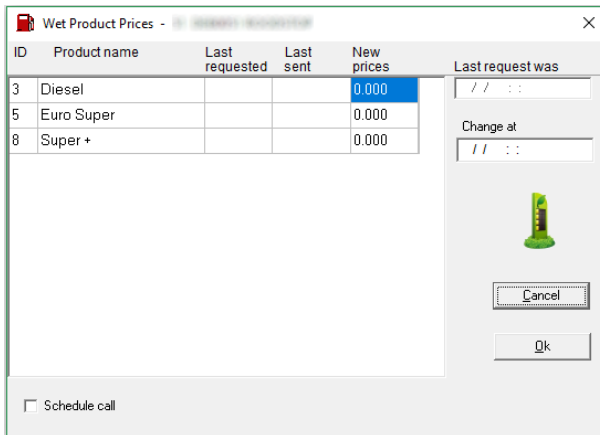
When this box is checked, call on hold has been added to the scheduler. To activate this call, select the correct action and click the button [**Hold**]. The prices will be sent to the station selected in the previous steps. The call is first put on hold because it will modify prices at the station. This setting allows you to check the action before activating it, so as to avoid errors.

6. 4. Pre-init wet fuel prices

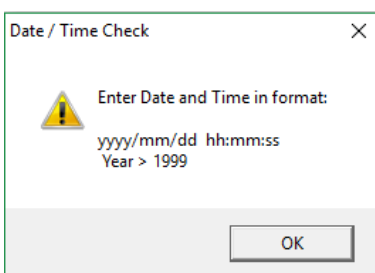
This function is used to adjust pre-initialised fuel prices. These are fuel prices that have been programmed to change on a given time. When only 1 station has been selected, the fuel prices as entered will be adjusted. When a group of stations has been selected, the fuel prices will be send taking into account the commercial profiles each station is linked to.



You can send pre-initialised fuel prices by clicking [**Pre-init wet fuel prices**] in the Edit menu. The layout of the window is similar to the Fuel prices window in 6.3 Fuel prices. The only difference here is that you will have to specify the date and time on which the prices need to be adjusted in the 'Change at' field.



When you do not complete the 'Change at' field, the following error will be appear.



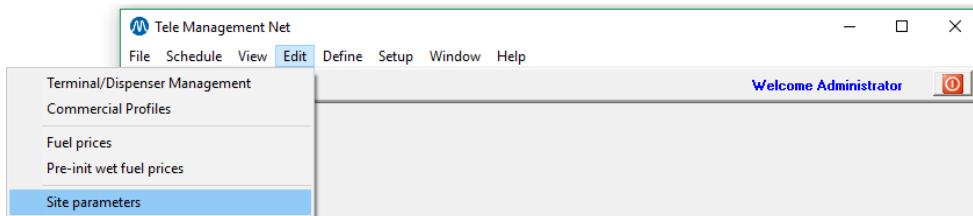
After entering everything correctly, confirm by clicking [**OK**]. TMS will then ask if the data needs to be saved in the database. When clicking [**Yes**], the prices are saved in the database but they are not updated at the station. A call action – Send wet pre-init prices needs to be scheduled to send the new prices stored in the database to the specified station.

When checking the checkbox 'Schedule call', as shown on the screenshot above, the pre init fuel prices will be send immediately.

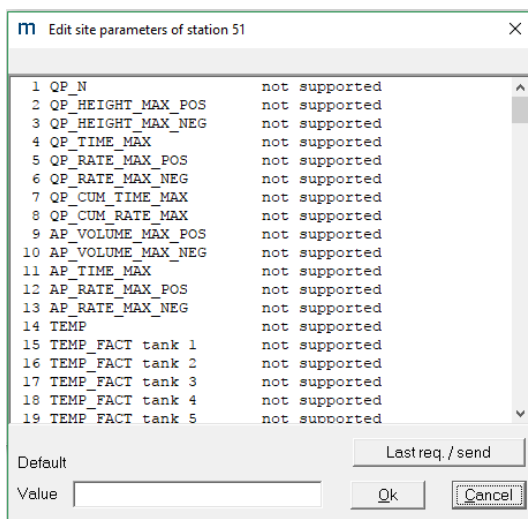
When this box is checked, call on hold has been added to the scheduler. To activate this call, select the correct action and click the button **[Hold]**. The prices will be sent to the station selected in the previous steps. The call is first put on hold because it will modify prices at the station. This setting allows you to check the action before activating it, so as to avoid errors. There is a possibility to change this parameter so the call will not be put on hold first. To change this setting see 7.4 Parameters.

6. 5. Site parameters

This function is used to configure dynamical parameters for the site. For more information about these parameters consult Reconciliation.doc.



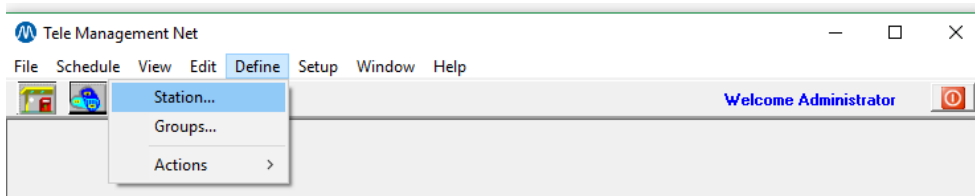
When clicking the **[Site parameters]** button in the Edit menu, the window below will appear. The button **[Last req. /send]** allows you to switch between the last requested and last send parameters.



7. Define menu

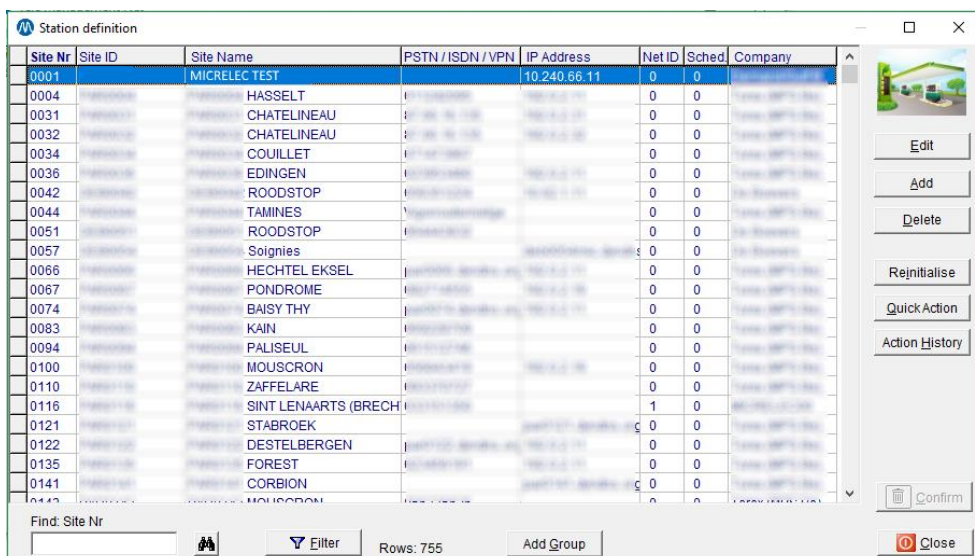
7. 1. Station

Here, you will be able to manage defined stations and to add new ones. It is also possible to link a commercial profile to a station.




After clicking **[Station...]** in the Define menu, the window below will pop up. The window contains a list of all the defined stations and some of their information.

- **[Edit]**: this button allows you to edit an existing station.
- **[Add]**: this button allows you to add stations to the list. See also 7.1.1. Add button.
- **[Delete]**: this button allows you to delete a selected station. See also 7.1.2. Delete button.
- **[Reinitialise]**: this button allows you to reset all site history and data.
- **[Quick Action]**: this button allows you to launch an action for a selected station.
- **[Action History]**: this button allows you to consult the action history of the selected station.
- **[Find Site Nr]**: this function allows you find a station. Enter a value in this field and press **[ENTER]** or click the binoculars button. The station you were looking for is selected.
- **[Filter]**: this button allows you to display stations which meet specific settings. See also 7.1.3. Filter button.
- **[Add Group]**: this button allows you to create groups. Move the stations belonging to the new group using the arrows. Enter a name in the field at the top of the screen. Click **[Save]**.
- **[Close]**: this button allows you to close this window.

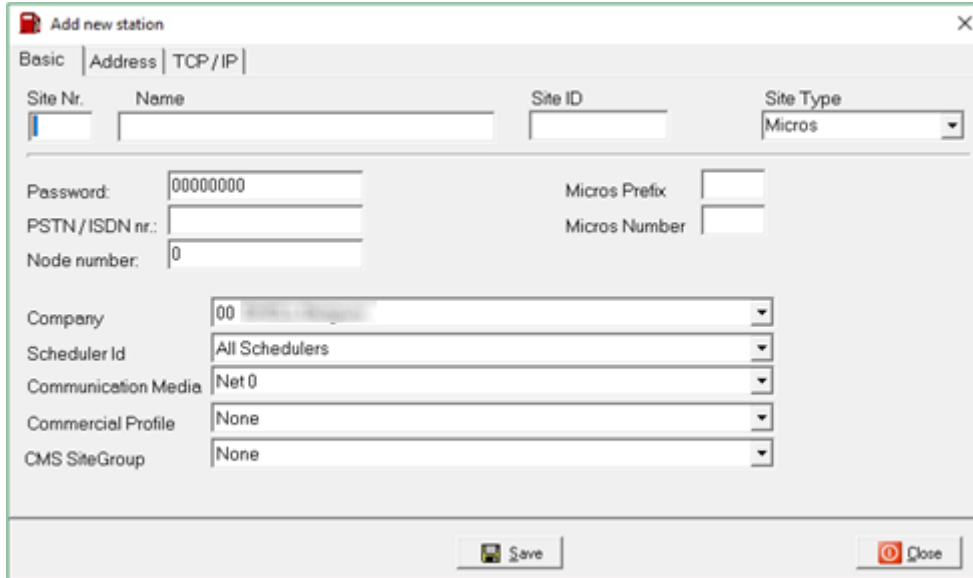


Site Nr	Site ID	Site Name	PSTN / ISDN / VPN	IP Address	Net ID	Sched	Company
0001		MICRELEC TEST		10.240.66.11	0	0	
0004		HASSELT			0	0	
0031		CHATELINEAU			0	0	
0032		CHATELINEAU			0	0	
0034		COUILLET			0	0	
0036		EDINGEN			0	0	
0042		ROODSTOP			0	0	
0044		TAMINES			0	0	
0051		ROODSTOP			0	0	
0057		Soignies			0	0	
0066		HECHTEL EKSEL			0	0	
0067		PONDROME			0	0	
0074		BAISY THY			0	0	
0083		KAIN			0	0	
0094		PALISEUL			0	0	
0100		MOUSCRON			0	0	
0110		ZAFFELARE			0	0	
0116		SINT LENAARTS (BRECH)			1	0	
0121		STABROEK			0	0	
0122		DESTELBERGEN			0	0	
0135		FOREST			0	0	
0141		CORBION			0	0	
0142		MOUSCRON			0	0	

Find: Site Nr  Rows: 755

7. 1. 1. Add button

The Basic tab:

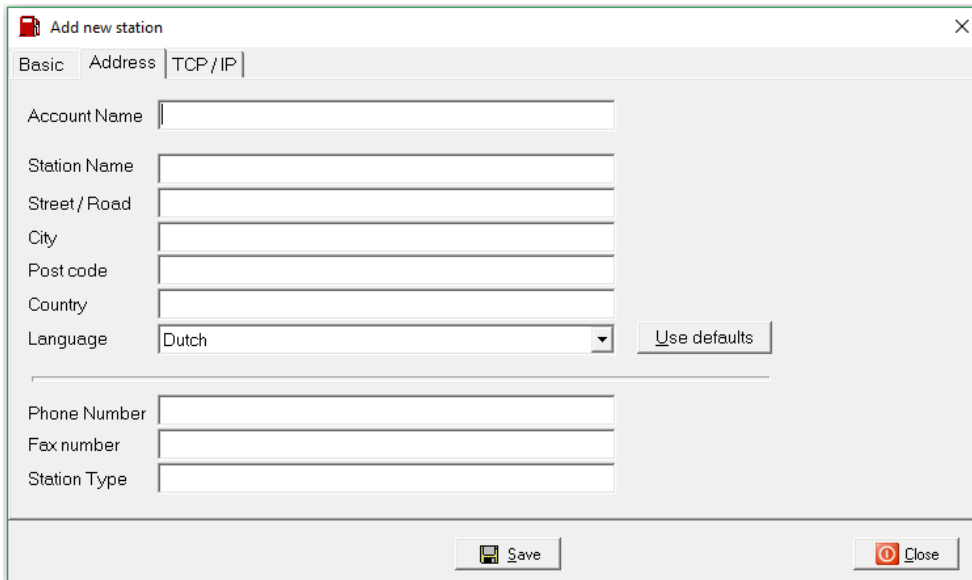


Here, you will find all the basic data needed for a station to be added:

- Site Nr.: number of the site
- Name: name of the site
- Site ID: ID given to the site.
- Site type: there are 3 types of sites.
 - Micros
 - Tokheim
 - Dummy: not in use
- Password: not used. The value will always be '00000000'.
- PSTN/ISDN nr.: modem number from the station.
- Node number: used when more devices are connected on 1 modem line.
- Company: the station's company name.
- Scheduler Id: used when working with different schedulers.
- Communication Media: Micrelec defines what Net 0 and Net 1 means.
- Commercial Profile: used to link a station to a commercial profile. (see 6.2. Commercial profiles)
- CMS SiteGroup: to add this station to a site group. You can select a Site Group when using the CMS software.

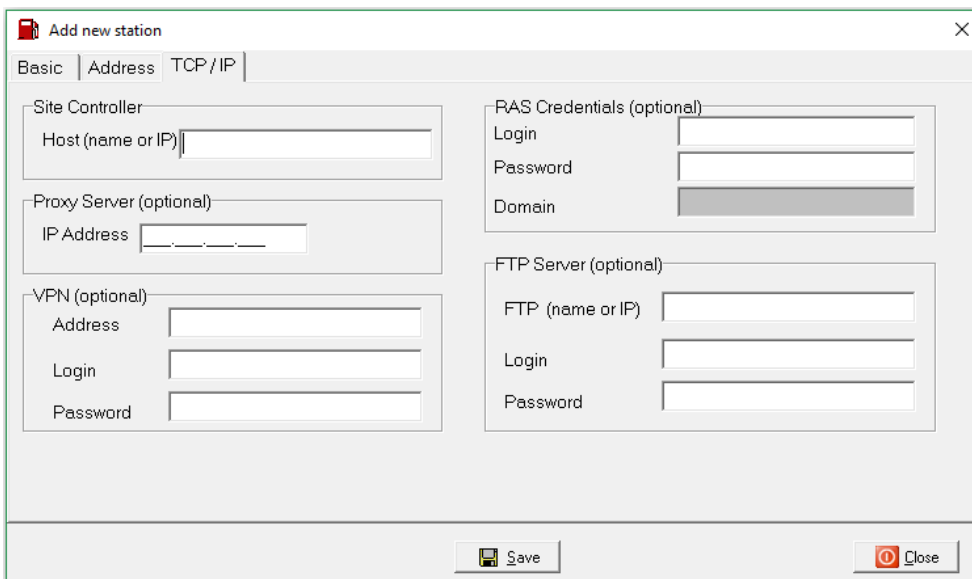
Click [**Save**] to finish the creation of the site. Click [**Close**] to close the window.

The Address tab:



This is general information about the station.

The TCP/IP tab:



Here, you will find the following fields:

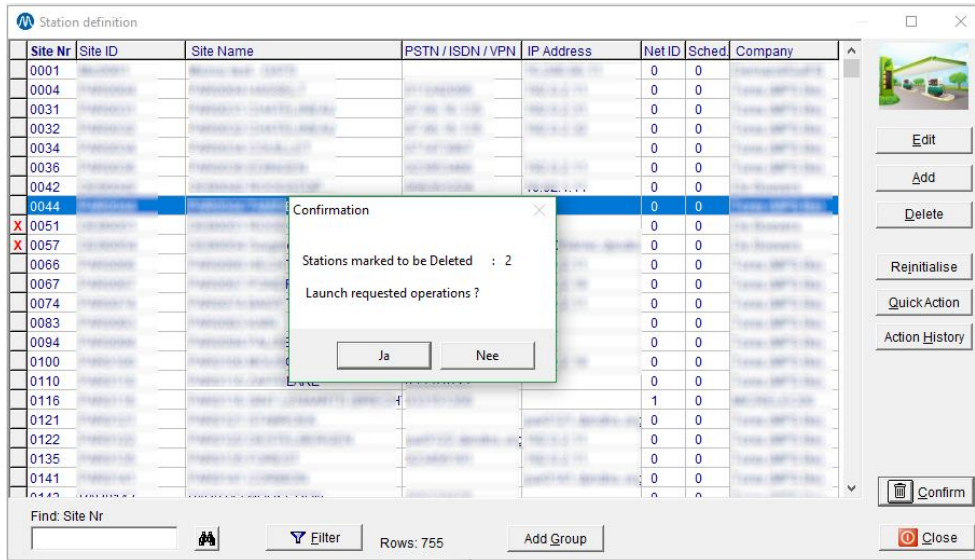
- Login: login to connect onto the system.
- Password: password to connect onto the system.
- Domain: domain URL
- FTP Server: server address if used
- IP address: IP address when using TCP/IP communication.
- Login: login to connect to the FTP or VPN
- Password: password to connect to the FTP or VPN
- IP Address Proxy server: server IP address if used

7. 1. 2. Delete button

This button allows you to delete a selected station.

Select the station(s) you want to delete and click the **[Delete]** button. The marked stations will have a red X at the beginning of the line. You can mark several stations for deletion at once. After you are done selecting stations to be deleted, confirm the selection with the **[Confirm]** button.

TMS will count the stations marked to be deleted and will ask whether to launch the operation or not.



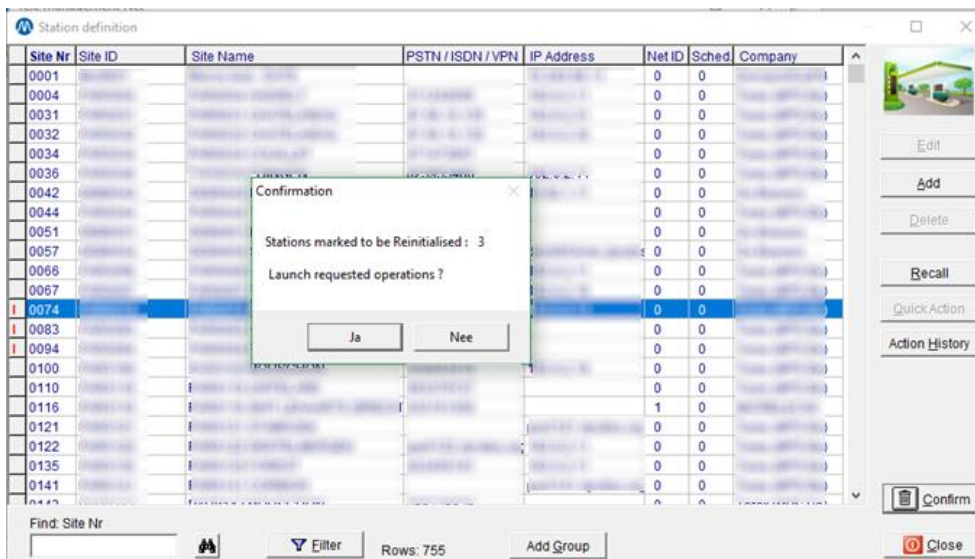
NOTE: All data about a station will be lost when it is deleted.

7. 1. 3. Reinitialise button

This button allows you to reset all site history and data.

Select the station(s) you want to reset and click the **[Reinitialise]** button. The selected stations will have a red marking at the beginning of the line. You can mark several stations for reinitialization at once. After you are done selecting stations, confirm the selection with the **[Confirm]** button.

TMS will count the stations marked to be deleted and will ask whether to launch the operation or not.



7. 1. 4. Filter button

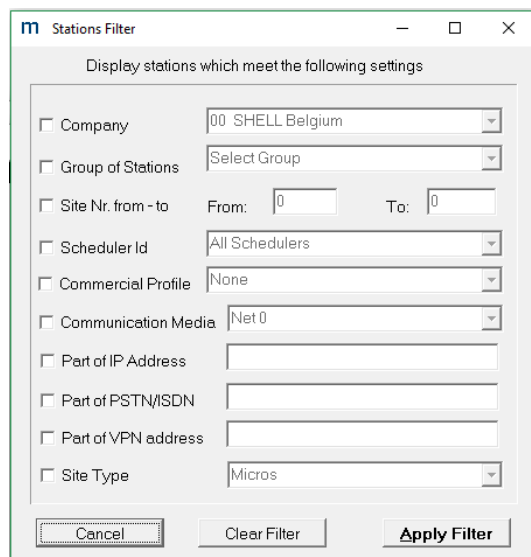
This button allows you to find stations.
There are several criteria:

- Company: the station's company name.
- Group of stations: the group a station belongs to.
- Site Nr. from – to: the range of site numbers you want to have displayed.
- Scheduler Id: used when working with different schedulers.
- Commercial profile: the profile a station belongs to.
- Part of IP Address: a part of the IP address of the station.
- Part of PSTN/ISDN: a part of the modem number of the station.
- Part of VPN address: a part of the VPN address of the station.
- Site Type: type of site
 - Micros
 - Tokheim
 - Dummy: not used

Click **[Apply Filter]** to launch the search filter.

Click **[Clear Filter]** to clear all fields.

Click **[Cancel]** to cancel the search filter.



m Stations Filter

Display stations which meet the following settings

Company: 00 SHELL Belgium

Group of Stations: Select Group

Site Nr. from - to: From: 0 To: 0

Scheduler Id: All Schedulers

Commercial Profile: None

Communication Media: Net 0

Part of IP Address:

Part of PSTN/ISDN:

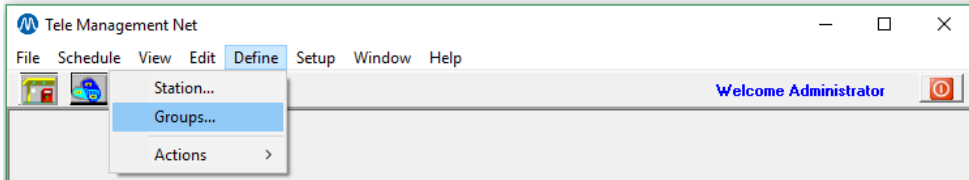
Part of VPN address:

Site Type: Micros

Cancel Clear Filter **Apply Filter**

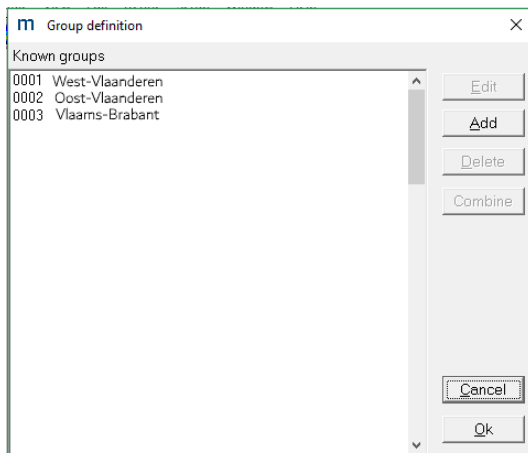
7. 2. Groups

This function is used to create groups. Several stations can be added to a certain group. This is useful when the same action has to be executed for several stations.



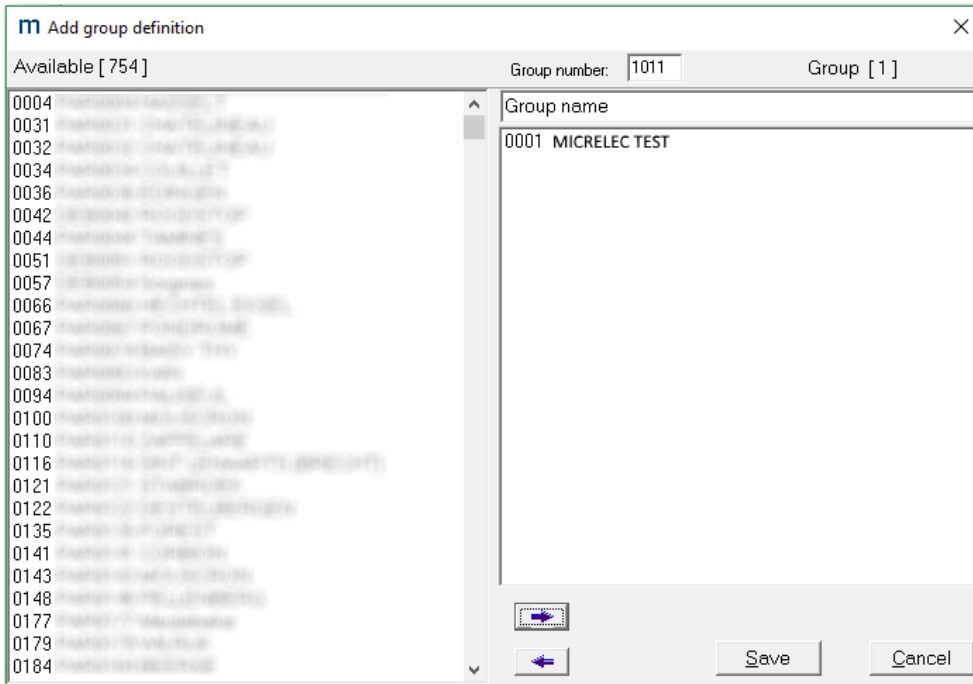
After clicking [**Groups...**] in the Define menu, the screen below pops up. The window contains a list of all the existing groups.

- **[Edit]**: this button allows you to edit a group. This includes removing stations from the group, adding stations to the group and changing the group's name.
- **[Add]**: this button allows you to add a new group.
- **[Delete]**: this button allows you to delete a group. Note: this will not the stations in the group.
- **[Combine]**: this buttons allows you to combine groups.



7. 2. 1. Add button

When adding a group, you need to specify the group name and the stations that need to be added to this group. Multiple stations can be selected using the CTRL button on your keyboard. By clicking the arrow button (→) stations are added to the group. When the user selects stations under the group and clicks the arrow button (←) the user is removing stations from the group.



7. 2. 2. Delete button

It is possible to delete multiple groups at once (the stations in the group will not be removed). To delete, you can click group(s) one by one and click **[Delete]** every time. The groups selected for deletion have a * in front of them.

After clicking the **[OK]** button the groups with a * in front of them are removed.

7. 2. 3. Edit button

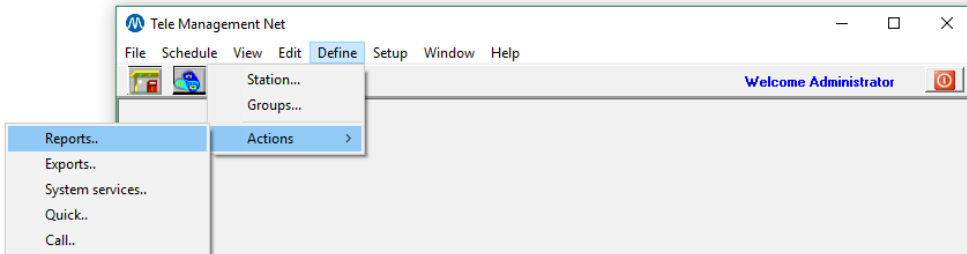
This button allows you to edit existing groups.

Moreover, with this button you can also copy existing groups. Open an existing group, enter a new group number and save. The existing group will be copied and saved with a new group number.

7. 3. Actions

7. 3. 1. Reports

There are a few predefined reports. However, it is also possible to customise reports.



After clicking **[Actions]** / **[Reports]** in the Define menu, the window below pops up. You will see a list of all existing reports.

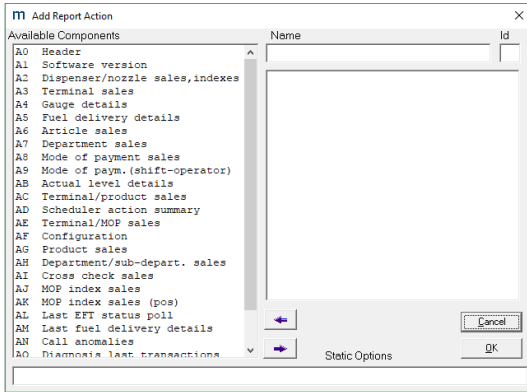
- **[Edit]**: this button allows you to adjust an existing report.
- **[Add]**: this button allows you to create a new report.
- **[Delete]**: this button allows you to delete the selected report(s).
- Group: this drop-down list allows you to filter the reports based on Groups.
- **[Cancel]**: this buttons allows you to close this window.

D	Nr	Action Description	Group	Script Details	Static Options
	84	MOP index and terminal sales		A0A3AEAJAKA8A9	
	85	MOP index		AJAK	
	86	test		A5AM	
	87	Report call anomalies		AN	
	88	EFT status poll		AL	
	89	Complete Texaco		A0A1A2A3ACAEAGA4A5A7A8A9	
	90	Config+gauges		A0AFA4	
	91	cross check		A0A3AIA8AJ	
	92	header, MOP		A0A8A9AJAKAGA3ACAE	
	93	Test actual level details		A0A4ABAMAF	
	94	Action summary		AD	
	95	Complete period report WDM		A0AFA2AGA3ACAE4A5A7AHA8A9AJAK	
	96	Complete period report WADM		A0A1AFA2AGA3ACAE7AHA8A9AJAKA6ABA4A5AM	
	97	Period nozzle sales		A0A2A1	
	98	Period gauge levels		A0A1A4	
	99	Wet period cutover		A0A1A2A3A4ACA5AEAG	

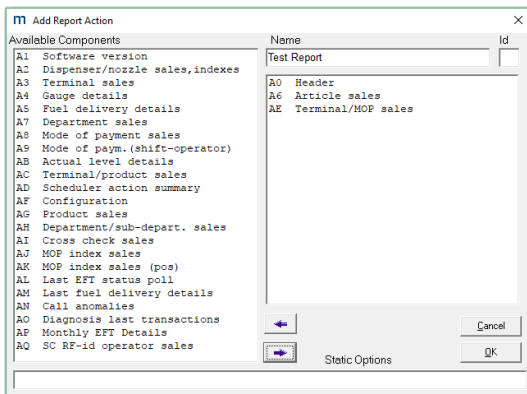
Group:

7. 3. 1. 1) Add button

After clicking the **[Add]** button, you will see a list of components to be included in the new report.



To create a report, you can move the blocks that are relevant to the new report using the arrow (→) button. Then, enter a name for the report. You will also need to specify the Id (top right corner of the window). This character is the first character for the file name of the report.



Click **[OK]** to save the new report. You can now schedule this report to be executed. See also 4. Schedule menu.

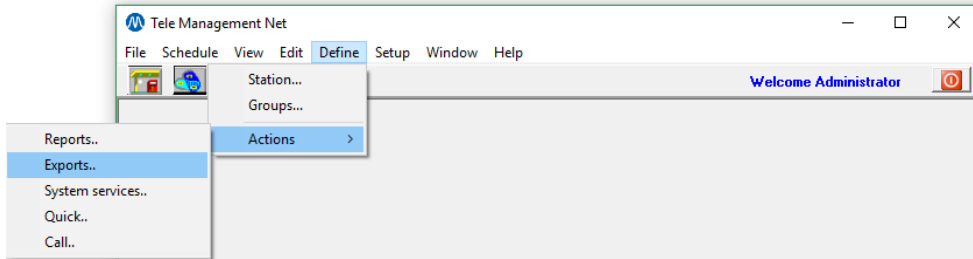
M Report Configuration					
D	Nr	Action Description	Group	Script Details	Static Options
	74	Test Report		A0A6AE	

For more information about the reporting components, see Appendix A.

NOTE: by entering certain commands in the 'Static Options' field, one can be able to change an action's behaviour. This is an advanced feature and will not be used.

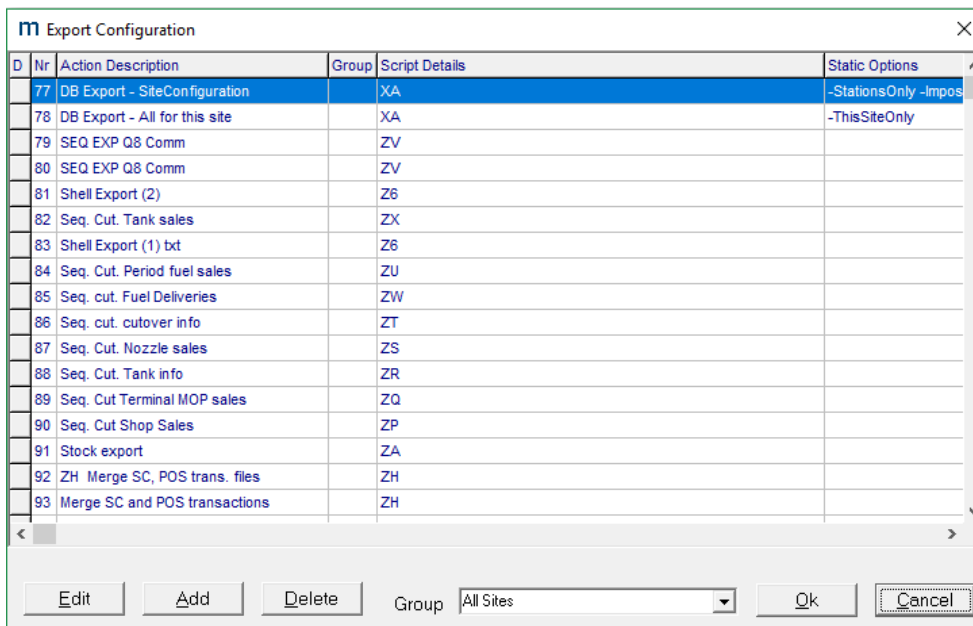
7. 3. 2. Exports

There are a few predefined exports. However, it is also possible to customise own exports. Exports are used to transfer data into a third party application (like a bookkeeping program).



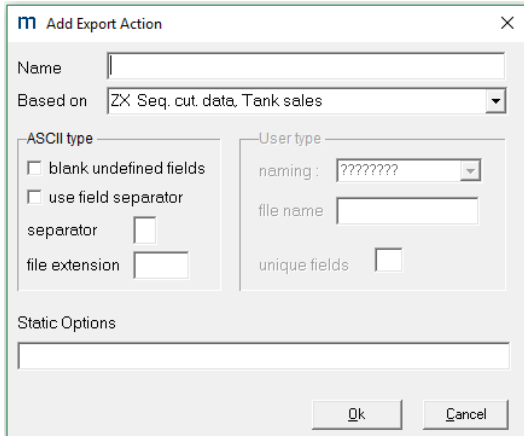
After clicking **[Actions]** / **[Exports]** in the Define menu, the window below pops up. You will see a list of all existing exports.

- **[Edit]**: this button allows you to adjust an existing export.
- **[Add]**: this button allows you to create a new export.
- **[Delete]**: this button allows you to delete the selected export(s).
- Group: this drop-down list allows you to filter the exports based on Groups.
- **[Cancel]**: this buttons allows you to close this window.



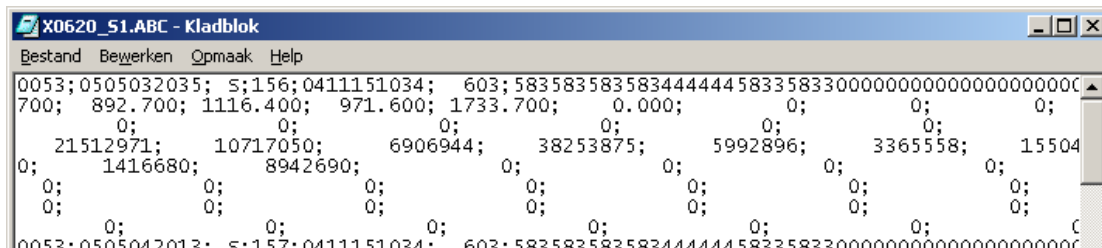
7. 3. 2. 1) Add button

Different types of exports can be added based on existing exports.

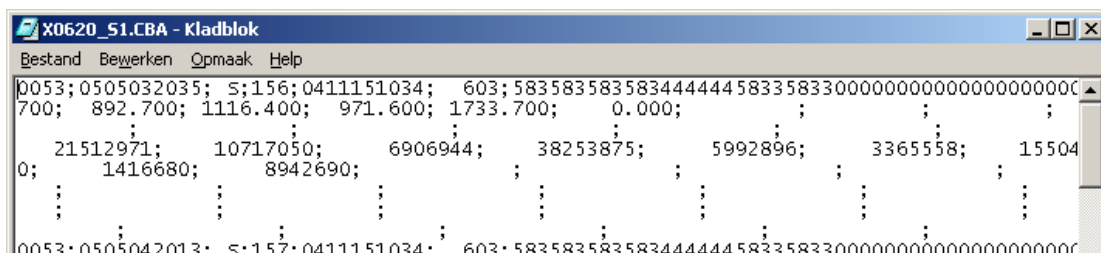


Some fields need explanation

- Blank undefined fields: when certain fields have not been completed, it is possible to keep them blank by checking this checkbox. If this checkbox is not ticked, the blank fields will have value 0 in the export file. When this box has not been checked, you will get the following result:



When this box has been checked, you will get the following result:



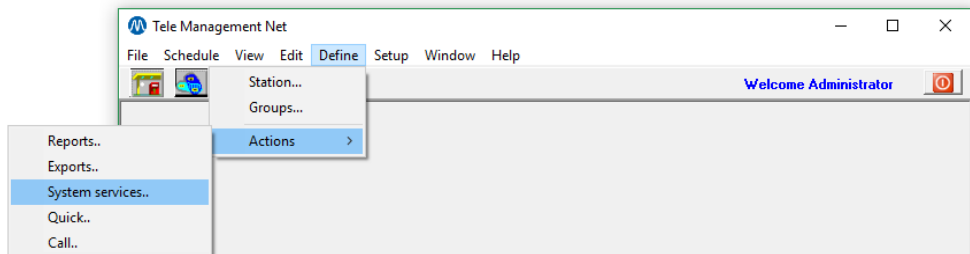
- Use field separator: this options allows you to define the separator used between every field in the export. Check this box and add a separator in the field below.
- File extension: this options allows you to specify the extension for the export file.

For more information about Exports see Appendix B.

NOTE: by entering certain commands in the 'Static Options' field, one can be able to change an action's behaviour. This is an advanced feature and will not be used.

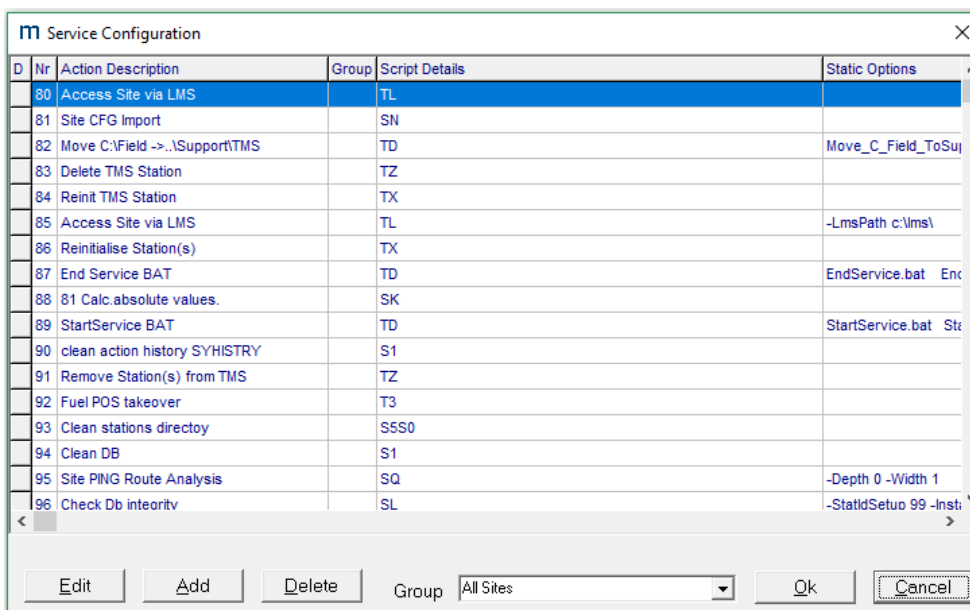
7. 3. 3. System services

There are a few predefined system services. However, it is also possible to customise own services. System services are used for maintenance, backup, accessing the backoffice, etc.



After clicking **[Actions]** / **[System services]** in the Define menu, the window below pops up. You will see a list of all existing exports.

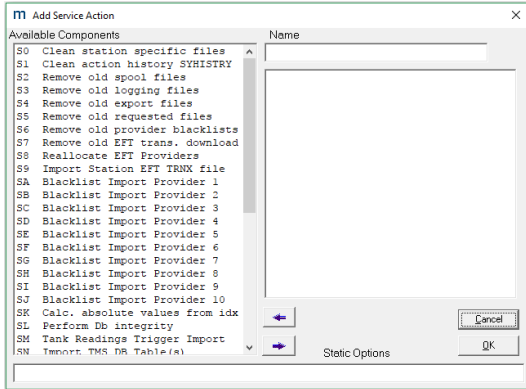
- **[Edit]**: this button allows you to adjust an existing service.
- **[Add]**: this button allows you to create a new service.
- **[Delete]**: this button allows you to delete the selected service(s).
- Group: this drop-down list allows you to filter the services based on Groups.
- **[Cancel]**: this buttons allows you to close this window.



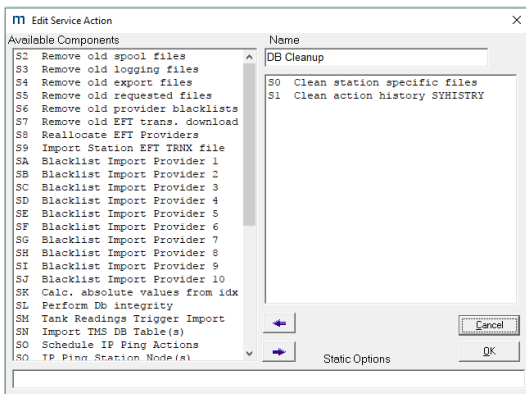
D	Nr	Action Description	Group	Script Details	Static Options
	80	Access Site via LMS		TL	
	81	Site CFG Import		SN	
	82	Move C:\field ->..\Support\TMS		TD	Move_C_Field_ToSup
	83	Delete TMS Station		TZ	
	84	Reinit TMS Station		TX	
	85	Access Site via LMS		TL	-LmsPath c:\lms\
	86	Reinitialise Station(s)		TX	
	87	End Service BAT		TD	EndService.bat Enc
	88	81 Calc.absolute values.		SK	
	89	StartService BAT		TD	StartService.bat St
	90	clean action history SYHISTORY		S1	
	91	Remove Station(s) from TMS		TZ	
	92	Fuel POS takeover		T3	
	93	Clean stations directoy		S5S0	
	94	Clean DB		S1	
	95	Site PING Route Analysis		SQ	-Depth 0 -Width 1
	96	Check Db integrity		SL	-StatIdSetuo 99 -Inst

7. 3. 3. 1) Add button

After clicking the **[Add]** button, you will see a list of components to be included in the new service.



To create a service, you can move the blocks that are relevant to the new service using the arrow (→) button. Then, enter a name for the service. In the example below, a service was created for DB Cleanup.



Click **[OK]** to save the new report. You can now schedule this service to be executed. See also 4. Schedule menu.

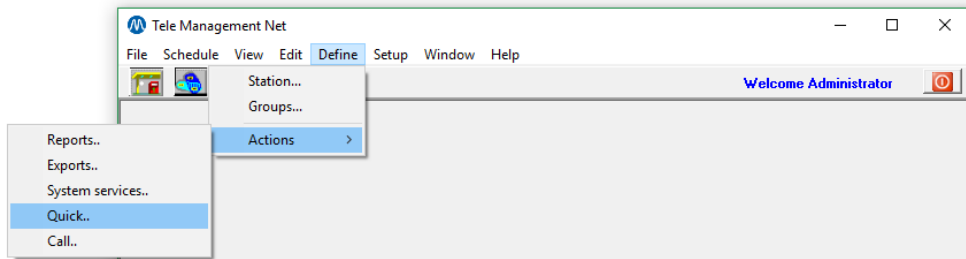
Service Configuration					
D	Nr	Action Description	Group	Script Details	Static Options
	79	DB Cleanup		S0S1	

For more information about the service blocks see Appendix C.

NOTE: by entering certain commands in the 'Static Options' field, one can be able to change an action's behaviour. This is an advanced feature and will not be used.

7. 3. 4. Quick

There are a few predefined quick actions. However, it is also possible to customise own actions. See also 3.3. Quick action and 4.2. Quick button.



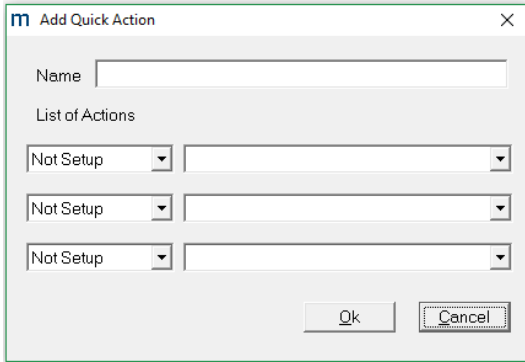
After clicking **[Actions]** / **[Quick]** in the Define menu, the window below pops up. You will see a list of all existing quick actions.

- **[Edit]**: this button allows you to adjust an existing quick action.
- **[Add]**: this button allows you to create a new quick action.
- **[Delete]**: this button allows you to delete the selected quick action(s).
- Group: this drop-down list allows you to filter the quick actions based on Groups.
- **[Cancel]**: this buttons allows you to close this window.

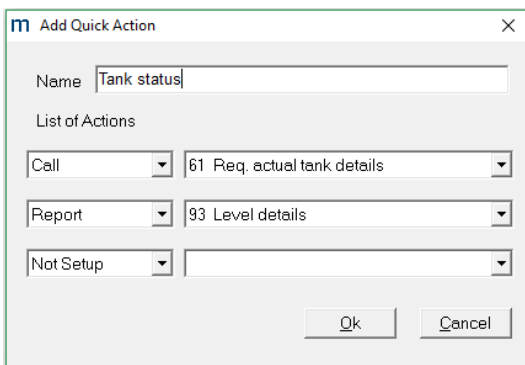
m Quick Action Configuration					
D	Nr	Action Description	Action 1	Action 2	Action 3
	0	Export tank details (10 Q8BE)	0/61 Req. actual tank details	2/96 Last tank readings, 15 tanks	
	1	Access Station via LMS	4/85 Access Site via LMS		
	2	SeqEx - 86lfo 84WfSal 85Deliv	2/86 Seq. cut. cutover info	2/84 Seq. Cut. Period fuel sales	2/85 Seq. cut. F
	3	SeqEx-88Tnk 89MopSal 90ShopSal	2/88 Seq. Cut. Tank info	2/89 Seq. Cut Terminal MOP sales	2/90 Seq. Cut St
	4	SeqEx- 82TkSal	2/82 Seq. Cut. Tank sales		
	5	Get Opt Config	0/19 GetNodeNwcSwvOptini		
	6	Access site via LMS	4/80 Access Site via LMS		

7. 3. 4. 1) Add button

After clicking the **[Add]** button, the following window appears.



First enter a name for the quick action. Then, choose a type of action and specify which action has to be executed. It is possible to define up to 3 actions to be executed subsequently. For example, a tank status report is needed. First, TMS will need to extract data from the station. Therefore, we will need to schedule a call action – Req. actual tank details. Then, TMS will need to make a report. Therefore, we will need to schedule a report action – Level details.



Click **[OK]** to save the new quick action. You can now schedule this action to be executed. See also 3.3. Quick action and 4.2. Quick button.

m Quick Action Configuration					
D	Nr	Action Description	Action 1	Action 2	Action 3
	0	Export tank details (10 Q8BE)	0/61 Req. actual tank details	2/96 Last tank readings, 15 tanks	
	1	Access Station via LMS	4/85 Access Site via LMS		
	2	SeqEx - 86lfo 84WtSal 85Deliv	2/86 Seq. cut. cutover info	2/84 Seq. Cut. Period fuel sales	2/85 Seq. cut. F
	3	SeqEx-88Tnk 89MopSal 90ShopSal	2/88 Seq. Cut. Tank info	2/89 Seq. Cut Terminal MOP sales	2/90 Seq. Cut St
	4	SeqEx- 82TkSal	2/82 Seq. Cut. Tank sales		
	5	Get Opt Config	0/19 GetNodeNwcSwvOptini		
	6	Access site via LMS	4/80 Access Site via LMS		
	7	Tank status	0/61 Req. actual tank details	1/93 Level details	

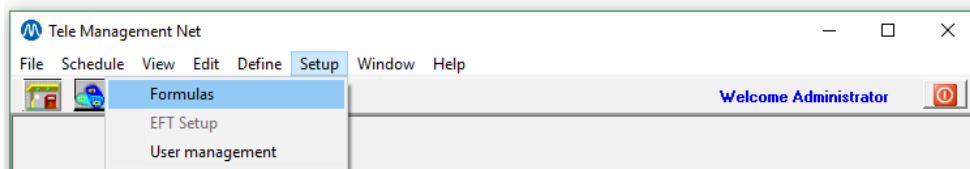
7. 3. 5. Call

There are a few predefined calls. However, it is also possible to customise own calls.

8. Setup menu

8. 1. Formulas

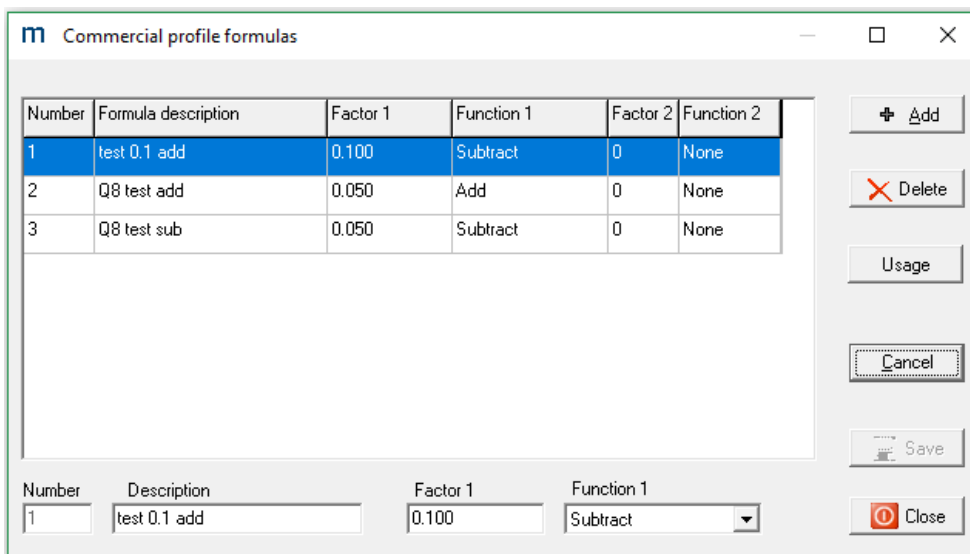
Formulas can generally be used for all kinds of mathematical operations in TMS. Currently, however, formulas are only used for commercial profiles.



After clicking **[Formulas]** in the Setup menu, the window below pops up. You will see a list of all existing formulas.

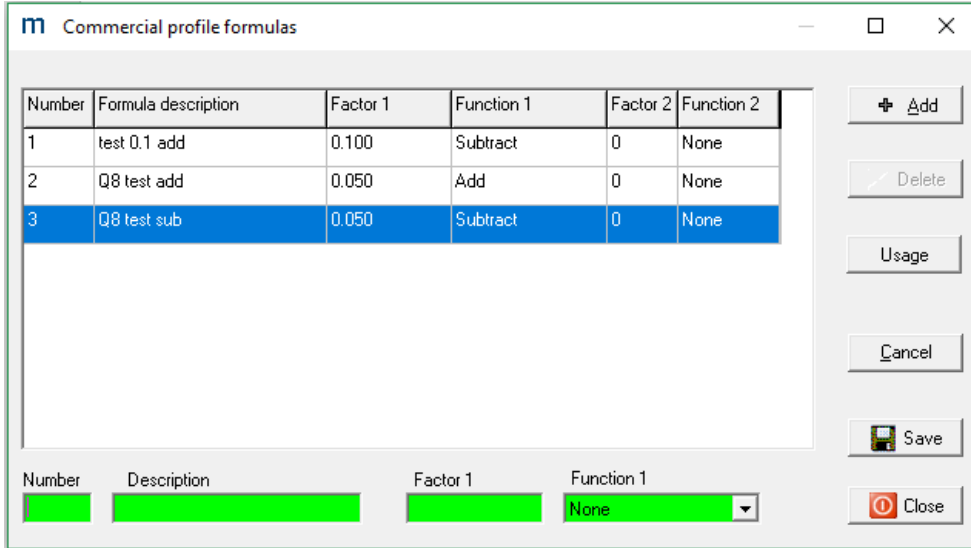
- **[Add]**: this button allows you to create a new formula.
- **[Delete]**: this button allows you to delete the selected formula (s).
- **[Usage]**: this button allows you to consult in which commercial profiles a formula is being used.
- **[Cancel]**: this buttons allows you to close this window.
- **[Close]**: this button allows you to close this window.

At the bottom of the screen, you will see the following information about the highlighted formula: number, description, factor and function.



8. 1. 1. Add button

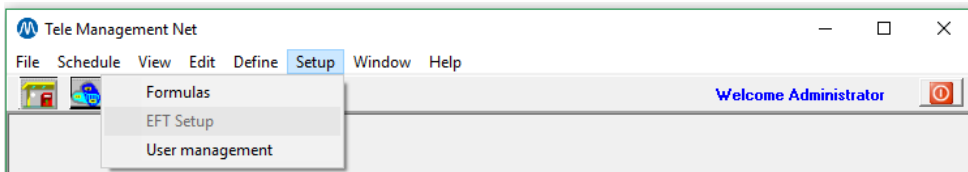
After clicking the **[Add]** button, you will see green fields at the bottom of the window.



Fill in a number and a formula description.
Then, enter a factor. This is the value that will be added or subtracted from the current prices on site.
Finally, enter a function. Choose whether the factor should be added or subtracted.

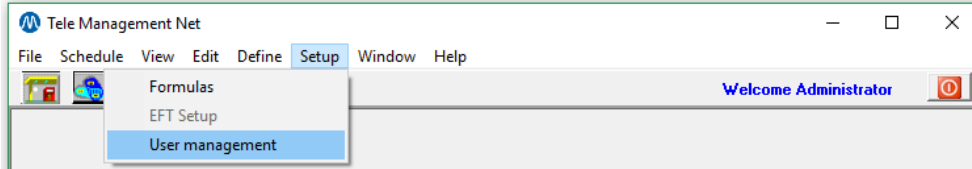
8. 2. EFT Setup

This function contains EFT related information.



8. 3. User management

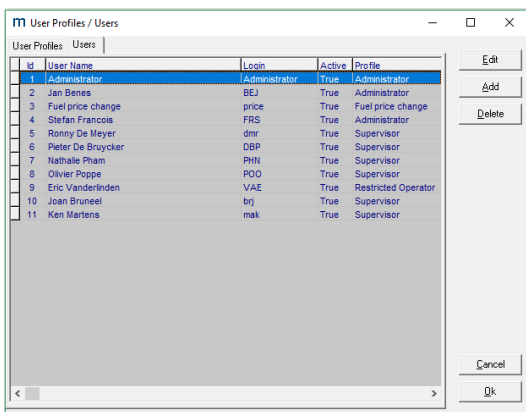
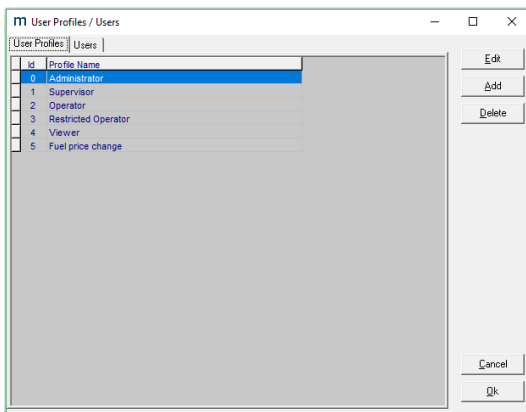
In this menu, you will be able to create and manage users.



After clicking **[User management]** in the Setup menu, the window below pops up.

- **[Edit]**: this button allows you to adjust an existing user/profile.
- **[Add]**: this button allows you to create a new user/profile.
- **[Delete]**: this button allows you to delete the selected user/profile(s).
- **[Cancel]**: this buttons allows you to close this window.

There are 2 tabs in this window: user profiles and users.



8. 3. 1. Tab User Profiles

There are 5 different levels of user profiles:

- **Administrator profile:** highest level, access to all TMS GUI resources
- **Level 1 profile:** access to action scheduling, station/action definition, fuel prices, SC parameters, Commercial profiles, viewing, action scheduling.
- **Level 2 profile:** access to station/action definition, fuel prices, SC parameters, Commercial profiles, viewing, action scheduling
- **Level 3 profile:** access to fuel prices, SC parameters, Commercial profiles, viewing, action scheduling
- **Level 4 profile:** only access to view resources. Other profiles can be created through Administration profile.

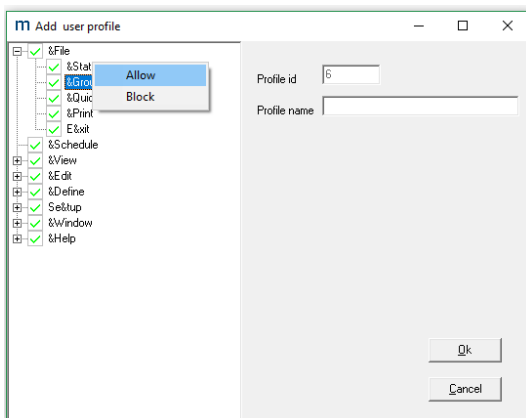
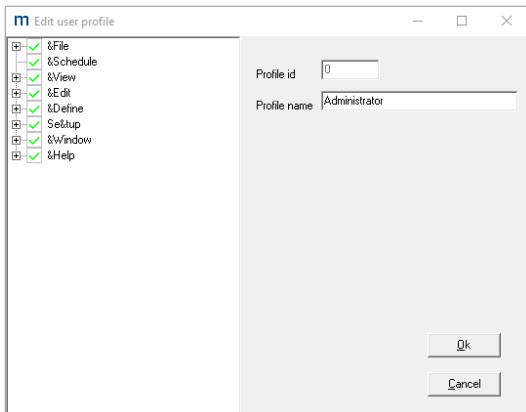
Users can be created through an administrator profile and are linked to one or more existing profiles. A user must be linked to a profile to obtain access rights to TMS.

To add a new profile, click **[Add]**.

To edit an existing profile, click **[Edit]**.

You will see the screen below. Here, you will be able to determine which actions can be performed by a user with that profile.

Right click the action and choose **[Allow]** or **[Block]**. When a menu is blocked, it is not possible to enter any of the underlying menu items.



8. 3. 2. Tab Users

In this tab, you will be able to create users based on user profiles.

To add a new user, click **[Add]**.

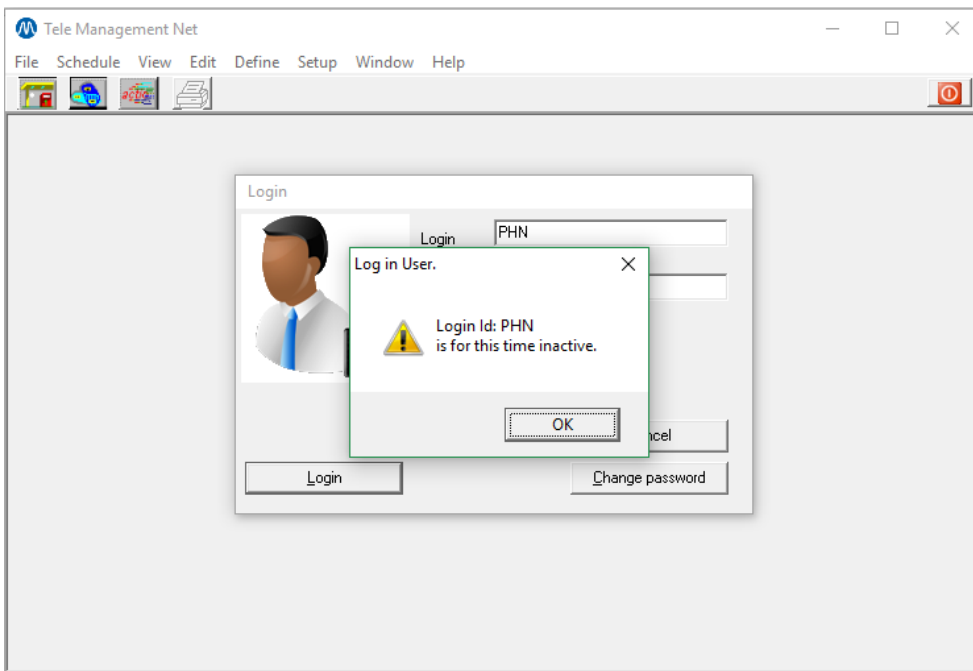
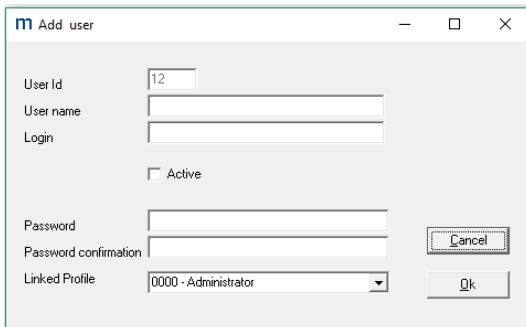
To edit an existing user, click **[Edit]**.

You will see the screen below.

Here, enter a user name and enter a login. The user Id is generated automatically.

Then, specify whether the user is active or not. When a deactivated user is used to log in, you will see the error message below.

Finally, enter a password and a confirmation and select a linked user profile.



8. 3. 3. User management related information

8. 3. 3. 1) Logging into file

For every successful login, a file will be added in the %TMSROOT%\LOG directory with the following name format SYSMDDhhmm.log where:

- MM is the month number.
- DD is the day number.

- hh is the hour when the user logged in.
- mm are the minutes when the user logged in.

8. 3. 3. 2) User action logging

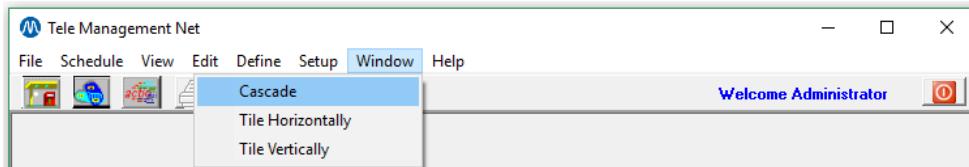
Following actions will be logged in TMS User logging:

- User log in/out
- Action scheduling: Add, Delete, Edit
- Site controller parameter modifications
- Terminal/dispenser/nozzle management
- Fuel price editing + commercial profile editing
- Station Definition: add, delete, modify
- EFT related modifications
- Admin tasks

9. Window menu

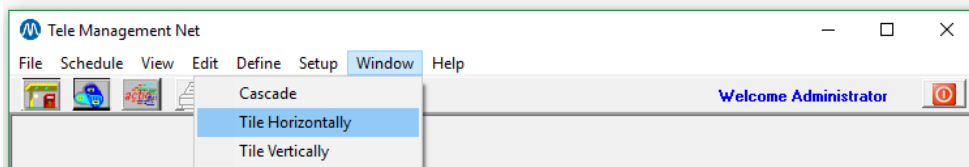
9. 1. Cascade

When selecting this option, the windows opened in the TMS main window will be shown in cascade form.



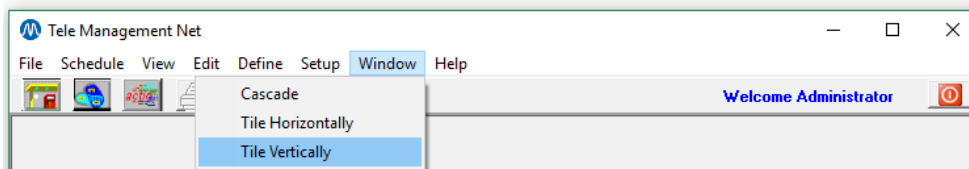
9. 2. Tile horizontally

When selecting this option, the windows opened in the TMS main window will be tiled horizontally.



9. 3. Tile vertically

When selecting this option, the windows opened in the TMS main window will be tiled vertically.

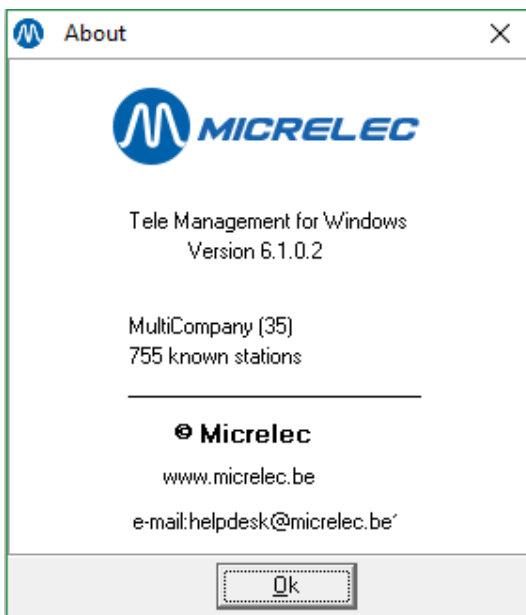
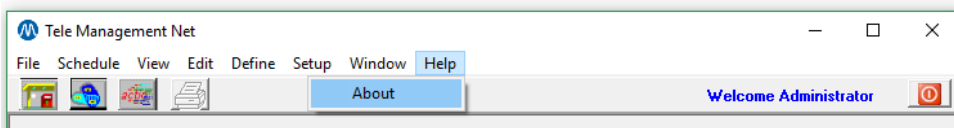


10. Help menu

10. 1. About

When clicking **[About]** in the Help menu, the window below will pop up.
In this window, you will see the following information:

- Version of the software release. (here 5.6.0.0)
- Type of installed TMS. (here multi-company)
- The number of defined stations. (here 10)
- The Torex Retail N.V. phone number.
- The Torex Retail N.V. fax number.



Appendix A: REPORTING COMPONENTS

A0	Header
	Shows from what station (or group) this report is created from. Shows when this report is created (date and time). Shows when the last data call is made to be able to make this report. Shows start and end time/date from the last closed period.
A1	Software version
	Shows the software version. Shows when the configuration (SC) has been adapted for the last time.
A2	Dispenser/nozzle sales, indexes (non-resettable totalizers)
	Shows per dispenser, per nozzle: Total amount (Money) Total volume of fuel dispensed Total number of transactions TooMuch: When the dispenser is pre-paid for 20€ of fuel but only 15€ is dispensed because the tank in your car is full, then the user is credited and remaining 5€ is put in TooMuch. (Usually Outdoor sales with BNA) TooLess: When the dispenser is pre-paid for 20€ of fuel but it is unable to stop exactly and overshoots to 20,15 (Badly working valve,..) then the remaining 15c is put in TooLess. IndexAmount: Amount of money from all the sales since the installation of the dispenser. IndexVolume: Amount of fuel from all the sales since the installation of the dispenser.
A3	Terminal Sales
	This shows the total amount, volume and number of transactions per terminal. There's also a general total shown of the amount, volume and transactions
A4	Level Details (period related)
	For every tank on the site is shown: The type of product in the tank. The capacity of the tank. Measured data: Height of the water level in the tank (millimetres). Height of the fuel level in the tank. Total volume of water in the tank (litres). Total volume of fuel in the tank (measured by LGS) Status: Status from the level gauge. Calculated data: Theoretical volume of fuel in the tank derived from registered deliveries and performed fuel sales
A5	Fuel delivery details
	Up to 4 last deliveries per tank are shown with the following data: Date and time of the delivery. Volume of the delivery (litre). Date and Time of delivery user input (when deliveries are entered by user) Delivery Volume as entered by the user

	Note: The last 4 deliveries shown are related to the totalisation period for which the report is generated. Deliveries happening during the currently running and yet unclosed period will not be shown here.
A6	Articles sales
	Per article: Article number. Article name. Sell Price for this article. Total amount sold Number of items sold. Total amount of returned items. Number of returned items. A total per column. This data is only available for sites with integrated POS
A7	Department sales
	Per department: Total Amount sold. Number of sales. Total amount of the returned items. Number of the returned items. A total per column. This data is only available for sites with integrated POS
A8	Mode of payment
	Per mode of payment (MOP): Number of the mode of payment. Description of the mode of payment. Exchange rate (in case of foreign currencies) Total amount of money tendered with this MOP. Number of transactions where MOP was used. Total amount of returned money Litres of fuel (if applicable) A total per column. This data is only available for sites with integrated POS
A9	Mode of payment (per operator shift)
	Per period, per POS (Point of sale), per shift (operator number, operator name, shift number, date and time for start of the shift): Number of the mode of payment. Description of the mode of payment. Exchange rate (in case of foreign currencies) Total amount of money tendered with this MOP. Number of transactions where MOP was used. Total amount of returned money Litres of fuel (if applicable) A total per column. This data is only available for sites with integrated POS

AB	Actual level details
	<p>Last known tank level details per tank:</p> <p>The type of product in the tank. The capacity of the tank.</p> <p>Measured data: Height of the water level in the tank (millimetres). Height of the fuel level in the tank. Total volume of water in the tank (litres). Total volume of fuel in the tank (measured by LGS) Status: Status from the level gauge.</p> <p>Calculated data: Theoretical volume of fuel in the tank derived from registered deliveries and performed fuel sales</p>
AC	Terminal/Product sales
	<p>Per terminal, per product :</p> <p>Total volume Total amount Number of transactions</p>
AE	Terminal/MOP sales
	<p>Per terminal, per MOP (Mode of Payment):</p> <p>Total volume Total amount Number of transactions</p>
AF	Site Configuration
	<p>Site Controller Software version, the last configuration change. Per dispenser, per nozzle: The number TMS uses for a nozzle. Fuel type (product name) Per tank: Product in the tank. Capacity of the tank. List of connected nozzles Description of the terminals present on the site.</p>
AG	Product Sales
	<p>Per product used on site:</p> <p>Unit price valid at the end of the totalisation period Total volume Total amount Number of transactions</p>

AH	Department/sub-department Sales
	Per department/sub department: Total Amount sold. Number of sales. Total amount of the returned items. Number of the returned items. A total per column. This data is only available for sites with integrated POS
AJ	MOP index sales
	Per index: Ex rate: Exchange rate. Comb amt: Combined total price (Fuel and Shop). Fuel amt: Fuel total price. Shop amt: Shop total price. For amt: Foreign amount.
AK	MOP index sales (pos)
	Per POS, per index: Ex rate: Exchange rate. Comb amt: Combined total price (Fuel and Shop). Fuel amt: Fuel total price. Shop amt: Shop total price. For amt: Foreign amount.
AL	Last eft status poll
	EFT related report.
AM	Last fuel delivery details
	Last known 4 deliveries per tank are shown with the following data: Date and time of the delivery. Volume of the delivery (litre). Date and Time of delivery user input (when deliveries are entered by user) Delivery Volume as entered by the user
AN	Call Anomalies (Station unspecific report)
	Report with all what went wrong from the last time this report was last issued. Failed TMS actions, exceptions encountered during action execution,... Using this report regularly allows for management by exception of all TMS related issues.
AO	Diagnosis last transactions
	Report with 20 last transactions as retrieved by the diagnostic call
AQ	SC RF-id operator sales
	Period totals split per operator (per RF-ID card) (Available when Fuel Sales Tagging through RF-ID cards is active)

Appendix B: EXPORTS

Exports made in the context of a call

During the call TMS fetches data and generates export file(s).

- POS Data
- SC Logging
- Specific data exports during a call

Exports generated from data stored in the database

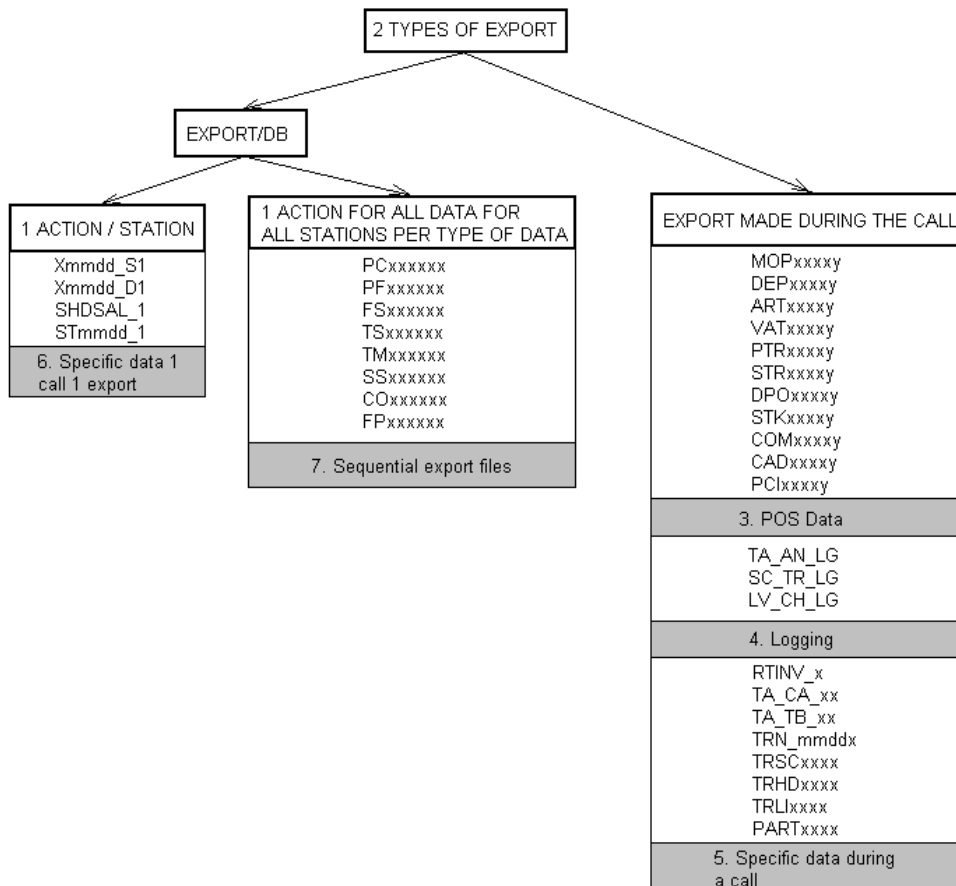
Various station calls fetch data from site and store it (also) in the database. Most of the data retrieved from site and stored is data related to a site period closure. A period on a site generally covers one day of operation. Stored data is then used to generate reports and exports. As only data already present in the DB can be exported, TMS is foreseen with features allowing the export to wait until the preceding data retrieval action(s) either succeeded or failed.

Station specific export files

Export file is on a per station basis. Export action needs to be scheduled for each station concerned.

Export files with data from all stations per type of data

Export file is on a data type basis and contains data from all sites. Only one station unspecific export action needs to be scheduled.



1. POS Data

POS DATA EXPORT FILES. (dynamic binary export)

Calls containing the BE script element retrieve and export the POS Binary Export files. The created files are located in the ..\trans directory.

File names follow following logic:

ZZZXXXXY.SSSS

ZZZ: Fixed, these 3 characters show what the content of the file is

XXXX: Period number from the SC.

Y: Sequence number of the POS period within the SC period (the last character).

SSSS: Number of the station.

All the information in the export files are obtained from the POS.

One file is created per station, per period, per type of data.

Content and types of available exports is configured on site on the POS.

(Can be done through a dedicated TMS call)

Exported files are located in the ..\trans directory.

This type of export is called binary export. The files are binary at the POS. TMS requests these files and converts them into CSV files.

Different types of the export files are:

- MOP: Method of payment totals of the period.
- DEP: Department totals of the period.
- ART: Article movement (sales total per article) over the period.
- VAT: VAT rates at the end of the period.
- PTR: Payment details for each sale in the period.
- STR: Sale details for each sale in the period.
- DPO: Department totals per shift.
- STK: Article stock at the end of the period.
- COM: Manager commission calculation details for the period.
- CAD: Details of credit account clients (Local accounts or LACC).
- PCI: Period closure info.
- NZS Nozzle Sales
- TAS Tank Status and Levels
- DSH Dry Stock Operation Header
- DSL Dry Stock Operation Lines
- LTY: Loyalty info file

For detailed information refer to the dedicated document about POS exports.

2. Site Controller Logging

TA_AN_LG (= Tank Analysis Logging)

Export is generated by call actions with script element requesting new TA_AN_LG - new records of Tank Analysis Log. Used also by Petrol 247 for follow up of the levels in the tanks.

File is located in ..\export directory, format is CSV and file extension follows the TMS station number.

SC_TR_LG (= Site controller Transactions Logging)

Export is generated by call actions with script element requesting new SC_TR_LG.
File is located in the ..\export directory, format is CSV and file extension follows the TMS station number. This file contains detailed information about each fuel transaction happening on the SC.

There are 2 types of SC_TR_LG files, a short version and a full version.
Type is configurable through the TMS.ini file in the root directory of TMS under the option 'FullSCTRNXLogg' in the block [EXPORT].

FullSCTRNXLogg=No is the short version
FullSCTRNXLogg=Yes is the full version

Full version contains more information, like payment and loyalty card numbers used,...

LV_CH_LG (= Level Change Logging)

Export is generated by call actions with script element requesting new LV_CH_LG.
File is located in the ..\export directory, format is CSV and file extension follows the TMS station number. This file contains detailed information about all level changes in all the tanks equipped with the level gauging system.

For more information about Site Controller logging see dedicated documentation (reconcil.doc)

3. Specific data exports during a call

Local invoices/credit notes

Export of invoices/credit notes created on the Site Controller in the sites. Export is generated by call actions with script element requesting new invoice records. In the same script, the previously obtained set of invoice records is confirmed to the SC.

As a side effect, TMS can re-generate the invoices as they were printed on the site. It can be switched on/off with 'GenLocInvoice' line in the block [REPORT] in the TMS.ini file.

When 1 is specified then the invoices are generated else only the export file is made.

After this call there is a file added in the \export directory.

The filename looks like this:

RTINV_s.PRN

RTINV: ReTail INvoice export file.

S: TMS session identification.

Tank calibration

The tank calibration files are used to analyse and calculate tank tables.
To request the tank calibration files the call action – Req tank X calibration logg is needed.
After one of these calls there is a file added in the specified directory in TMS.ini
Using the separator also specified in TMS.ini, to separate the columns.

The filename looks like this:

TA_CA_xx.ssss

TA_CA_: Tank calibration file

Xx : Tank number.

Ssss : The station number.

Tank tables

Tank table contains the conversion of height in tank to corresponding volume for multiple points (called straps). Tank tables can be sent and requested. Usually a dedicated call is foreseen for each operation. After requesting the tank tables the files are located in ..\temp directory.

The filename layout is:

TA_TB_xx.ssss

TA_TB_: Tank table file.

Xx : Tank number.

Ssss: The station number.

When new tank tables need to be send to the site, the files have to be located in the ..\Ssss\send directory of TMS with the correct filename.

Last 20000 SC fuel transactions

This export file contains the last 20000 fuel transactions. If the file already exists new records are appended.

Use call action – Request SC transact logging.

After this call a file is created in the ..\trans directory.

The filename layout is:

TRNmddn.ssss

TRN: SC fuel transactions.

Mm: Month number.

Dd: Day of month.

N: PC session number.

Ssss: The station number.

SC Period fuel transactions

This export file contains the details of all the fuel transactions within a period.

Use call action – Req. POS + SC transactions.

After this call files are created in the ..\trans directory.

The filename layout is:

TRSCcccc.ssss

TRSC: SC period fuel transactions.

Cccc: SC closure number.

Ssss: Station number.

POS period transactions: Headers and Lines

These export files contain data with all the POS transactions within a period. Header and Lines export files are always available together. Record key fields link content of the two files.

Use call action – Req. POS + SC transactions.
After this call files are created in the ..\trans directory.

Transaction Headers:

TRHDcccc.ssss

TRHD: POS period transaction headers.
Cccc: SC closure number.
Ssss: The station number.

Transaction Lines:

TRLIcccc.ssss

TRLI: POS period transaction line details.
Cccc: SC closure number.
Ssss: Station number.

Period transaction headers and lines (both POS and SC)

Export integrates all the transactions done within a period (both SC and POS).
TMS merges the SC transactions details into the POS transaction details.

First the call action – Req. POS + SC transactions is needed, followed by an export of ZH type – Merge SC, POS transaction Files. Export files are created in the ..\trans directory.

TRHDcccc.ssss, TRLIcccc.ssss

Cccc: SC period closure number.
Ssss: Station number.

Periodical article movements

This file contains all the article sales within a period.
Use call action – Fuel Shop Stock Art. Export file is created in the ..\trans directory.

PARTcccc.ssss

PART: Periodical article movements.
Cccc: SC period closure number.
Ssss: Station number.

For more information see dedicated TMS export documentation. (Telmanxx-xxx.doc.)

Station specific export files

60 Nozzles, 15 tanks

Export contains periodic information about the tank levels and nozzle sales, and POS sales ordered by MOP index.

One of the following call actions are needed: Fuel Shop Stock Invoice, Cutover Fuel Stock, Fuel Shop Stock Art, Fuel Shop Stock Inv. PI BE, Fuel Shop Stock Inv. PI POSSAL or Fuel Stock Shop.

Export Type: Z6 Sales 60 nozzles 15 tanks, ASCII

Export file is created in the ..\export directory.

Filename layout:

Xmdd_ts

X: eXport file.

Mm: Month number.

Dd: Day of month.

T: File type, group of export by closure sources.

 P: TMS.

 S: Closure started by operator, POS console, fuel console.

S: Session identification.

Last 4 fuel deliveries, 15 tanks

This gives the volume and start time of the last 4 fuel deliveries at the moment of the call.

Export Type: Z7 Fuel deliveries 15 tanks, ASCII

Export file is created in the ..\export directory.

Filename layout:

Xmdd_ts

X: eXport file.

Mm: Month number.

Dd: Day of month.

T: File type.

 D: Fuel delivery details.

S: Session identification.

Department export: department and sub department amount, 90 departments

Export of department sales (amounts) and sub-department sales (amounts) of every period.

Export Type: Z8 Department amounts, ASCII

 Z9 Sub-department amounts, ASCII

Export file is created in the ..\export directory.

Filename layout:

SHDSAL_s

SHDSAL: Fixed part of name.

S: Session identification.

4 behaviours of this export are supported, selected through TMS.ini file, option 'ASCIIDeptsMode' under the section [EXPORT].

ASCIIDeptsMode	Behaviour
1	Export without department 99 (fuel) information.
2	Export with department 99 (fuel) information.
4	Export without department 99 (fuel) information and with currency code information.
5	Export with department 99 (fuel) information and with currency code information.

Last tank reading, 15 tanks

Export of last collected tank details. The most recent available info from period closure or from collection of actual tank details are exported.

Export Type: ZA Last tank readings, ASCII

Export file is created in the ..\export directory.

Filename layout:

STmmdd_s

ST: Wet Stock details export file.

Mm: Month number.

Dd: Day of month number.

S: Session identification.

Last tank readings, XML&SQL

Export of last collected tank details from collection of actual tank details.

Export Type: X0 Last tank readings XML&SQL

Export file is created in a dedicated directory; at the same time can the data be inserted into an SQL database.

TMS DB Table(s) to CSV

Script dependent export capable of exporting content of various TMS DB tables for one site or for a given group of sites

Export Type: XA TMS DB Table(s) to CSV

Export file(s) can be found in the ..\export directory.

For more information about the exports consult dedicated documentation (telmanxx-xxx.doc)

Sequential export files

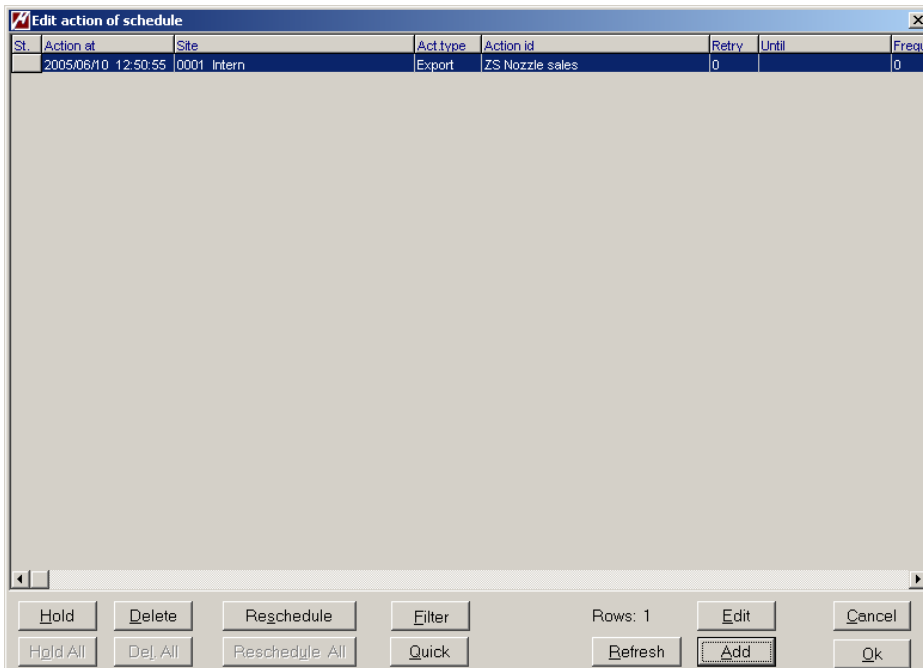
These export files are generated per data type basis (record layout) and contain data from all sites. Only one station unspecific export action needs to be scheduled for each export type (file). The way the data is organised makes these exports most suitable as interface files for import into an SQL database meant for network wide reporting.

2 variants of the sequential export exist. Variant 1 is less extensive. The variant is setup through the TMS.ini file, section [EXPORT] option 'SeqExpModifier'.

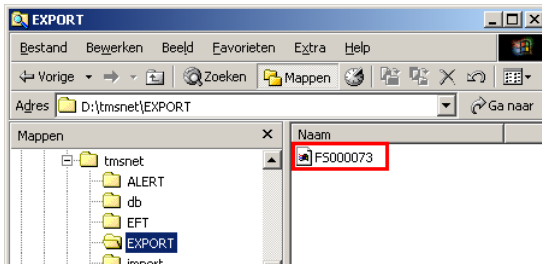
File name layout	Export Action Basis	Record Content
SSxxxxxx	ZP Seq.cut.data, Shop Sales	Period sales per (sub)department
TMxxxxxx	ZQ Seq.cut.data, Terminal MOP	Period payments per terminal
TSxxxxxx	ZR Seq.cut.data, Tank Status	Tank dipping related data
FSxxxxxx	ZS Seq.cut.data, Nozzle sales	Period nozzle sales
PCxxxxxx	ZT Seq.cut.data, Info file	Period closure generics
PFxxxxxx	ZU Seq.cut.data, Period fuel sales	Period fuel sales
COxxxxxx	ZV Seq.cut.data, Commission Info	Period commission details
FDxxxxxx	ZW Seq.cut.data, Fuel Deliveries	Fuel Deliveries
TPxxxxxx	ZX Seq.cut.data, Period tank sales	Period tank sales
RFxxxxxx	ZY Seq.cut.data, Period Tag Sales	Period sales per RF-ID tag

When using one of these exports the station in context of which the export is performed is not relevant. The resulting export file contains all available not yet exported information about all stations. An older already once exported sequential export file can be re-exported. To do so, export action must be re-launched but needs to specify the serial number of the export in the 'FROM' field (which is normally left blank).

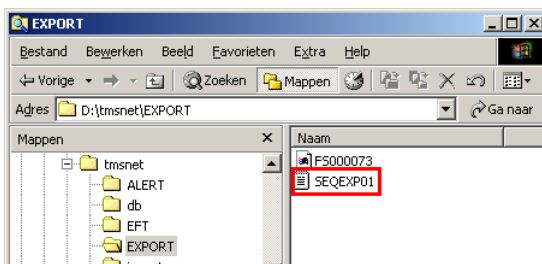
EXAMPLE: an export file to get information about Nozzle sales is made here.



In the export directory of TMS the file FS000073 is created.

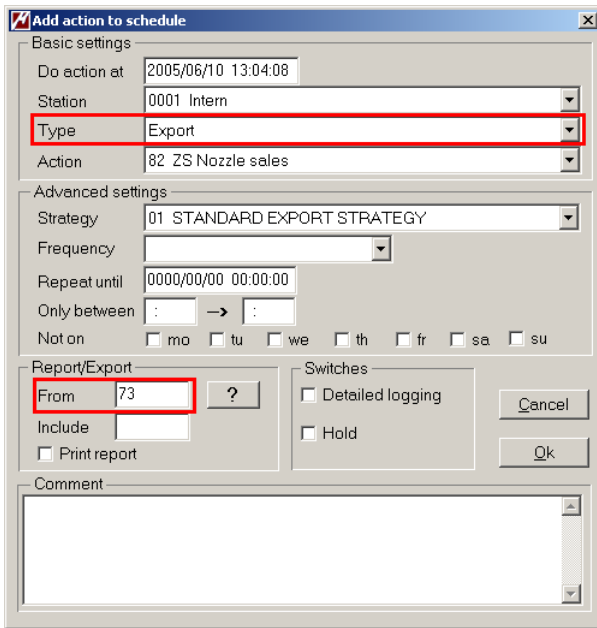


Export is being written into a temporary file SEQEXPxx.\$\$\$ and only upon a successful completion when any data were found is the file name changed. Presence of the temporary file in the export directory indicates failure to find any data to export.



TMS remembers which data went into which export file, and will not export same information twice. When the same file (FS000073) needs to be exported again, we note the sequential number of the export – 73. Further we need to know what type of export is required. First 2 characters of the file name FS means nozzle sales (see the table here above).

To remake the export file enter the sequence number in the “From:” field in section “Report/Export” and specify the right type of export, as shown below.



Upon completion the temporary file "SEQEXP01" is deleted and the original file FS000073 is overwritten with the re-generated export file.

For detailed information about sequential exports, see dedicated documentation (SequentialExport_x-x.doc)

Appendix C: SERVICES

S0	Clean station specific files
	DB cleanup. Deletes historic cutover data in the database, the number of historic cutover info stored in the database depends on the setting of the TMS.ini parameter HistoryDepth = (number of cutovers).
S1	Clean action history SYHISTRY
	DB cleanup. Deletes user scheduled action history in the database, the number of deleted records depends on the setting of TMS.ini parameter CleanSyHistor = (number of days).
S2	Remove old spool files
	Disk cleanup. Deletes old spool files (reports => spool directory) from disk. How many files are kept depends on TMS.ini setting CleanSpool = (number of days).
S3	Remove old logging files
	Disk cleanup. Deletes old log files (log directory) from disk. How many files are kept on disk depends on TMS.ini setting CleanCOMLog = (number of days).
S4	Remove old export files
	Disk cleanup. Deletes old export files (export directory) from disk. Number of files kept on disk depends on TMS.ini setting CleanExport = (number of days).
S5	Remove old requested files
	Disk cleanup. Deletes all received files from stations on disk (\stations\xxxx\recv directories), number of old files kept on disk depends on the TMS.ini parameter CleanFileReq = (number of days).
S6	Remove old provider blacklists
	EFT Server related service.
S7	Remove old EFT trans. Download
	EFT Server related service.
S8	Reallocate EFT Providers
	EFT Server related service.
S9	Import station EFT TRNX file
	EFT Server related service.
SA	Blacklist Import Provider 1
	EFT Server related service.
SB	Blacklist Import Provider 2
	EFT Server related service.
SC	Blacklist Import Provider 3
	EFT Server related service.
SD	Blacklist Import Provider 4
	EFT Server related service.
SE	Blacklist Import Provider 5
	EFT Server related service.
SF	Blacklist Import Provider 6
	EFT Server related service.
SG	Blacklist Import Provider 7
	EFT Server related service.
SH	Blacklist Import Provider 8
	EFT Server related service.

SI	Blacklist Import Provider 9 EFT Server related service.
SJ	Blacklist Import Provider 10 EFT Server related service.
SM	Tank Readings Trigger Import Process file trigger for fetch and export of site Tank dipping info
SN	Import TMS DB Table(s) Import records of TMS DB tables (passed from other TMS)
SO	Schedule IP Ping Actions Scripted insertion of actions for site connectivity problems analysis
SQ	IP Ping Station Node(s) Use Ping to analyse site IP connectivity problems
SV	Sum data to Virtual Station Merge Period data from a group of sites as if all came from one virtual site
SW	Fuel price file import ver. 2 Imports a fuel price file version 2.
SX	Loyalty info file import Imports a card – points relation file.
SY	Fuel price file import ver. 1 Imports a fuel price file version 1.
SZ	Tokheim Station Data Import Import Tokheim period data from local file
T0	Execute batch file tmsbat0.bat Launch external batchfile TMSBAT0.BAT
T1	Execute batch file tmsbat1.bat Launch external batchfile TMSBAT1.BAT
T2	Execute batch file tmsbat2.bat Launch external batchfile TMSBAT2.BAT
T3	FTP Fuelpos cutovers fetch Import Tokheim FuelPOS period data using FTP
TB	Backup database tables Perform compressed and verified backup of the database
TC	Transfer Files via FTP Scripted file operation(s) with an FTP host
TD	Execute Given Batch file Execute scripted operation using command.exe
TL	Access Site via LMS Build Connection channel, pass control to LMS and wait upon its termination
TX	Reinitialise Station(s) Reinitialise one station or a group of stations – forget all old data
TY	Re-index Historical Data Down Compact DB entries for a given site
TZ	Remove Station(s) from TMS Delete one station or a group of stations and all the related data from TMS